

Tatnuck Arms Apartments at Tatnuck Square

INTERIOR FEATURES

- Private, screened balconies
- Spacious floor plans
- *Ceramic-tiled bathrooms
- *Corian countertops
- Walk-in closets
- Individually controlled heat and A/C

* in select units

AMENITIES

- Swimming pool & sun deck
- Laundry facilities on every floor
- Security doors and intercom system
- Beautifully landscaped grounds
- 24-hour emergency maintenance service

Location!
Location!!
Location!!!

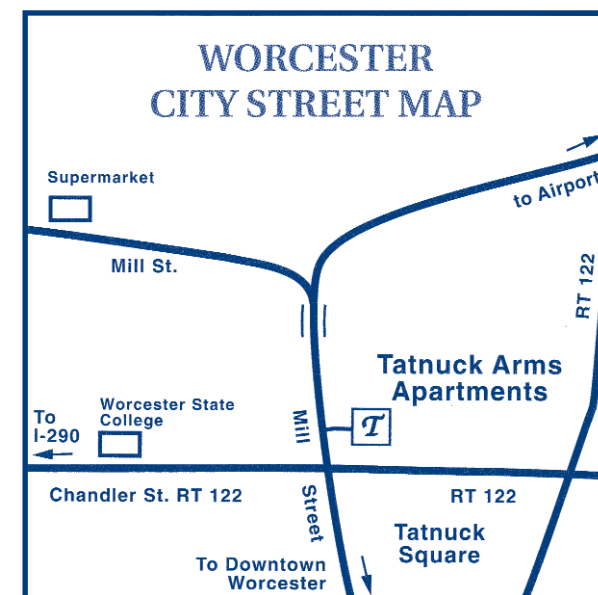
Tatnuck Arms Apartments is one of Worcester's best-kept secrets. Tucked away in a quiet corner of the city, our five buildings are set on eleven lovely country acres. Yet our modern complex is just ten minutes from downtown, in the desirable west side of Worcester, Massachusetts.

Feed the ducks in our brook, or walk past our lovely lawns and hedges to Tatnuck Square, a friendly mix of shops, restaurants and services. In the summer, relax at our private swimming pool.

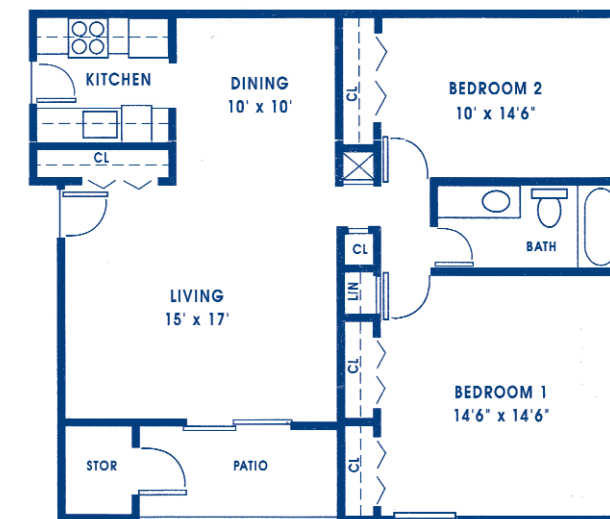
Country Comfort, Urban Convenience

Although the view from your balcony whispers country, only a block away are restaurants, banks, a major pharmacy, beauty salons, and a variety of retail shops. Worcester State College, with a walking track that's open to the public, is just a mile away. A world-class supermarket is also nearby. The elementary school is two blocks away, and city bus lines provide quick, convenient transportation from Tatnuck Square to downtown and other key locations.

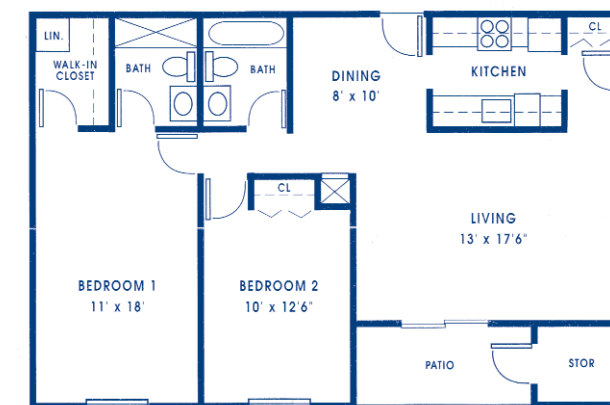
Stroll around our complex, wander through Tatnuck Square, and explore the many urban attractions and activities available in Worcester. Where else can you live in such a serene country setting, yet have all the amenities of a city just minutes away?



FLOOR PLANS

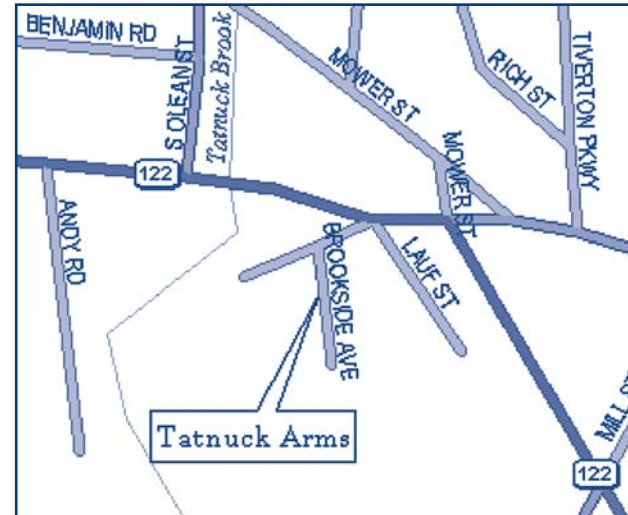


A 2 Bedrooms/ 1 Bath
970 - 1040 Square Feet



B 2 Bedrooms/ 2 Baths
1100 Square Feet

DIRECTIONS



Tatnuck Arms Apartments at Tatnuck Square

13 Brookside Avenue
Worcester, MA 01602
Phone: 508.756.2596
Fax: 508.767.0283
tatnuckapts@northland.com

From Boston

Take the Mass Pike I-90W to exit 11 RT-122 toward Millbury/Worcester
Bear right and take Grafton Rd ramp
Turn left at Grafton Rd
Bear right onto I-290E ramp to Shrewsbury/
Marlboro
See *

From West

Take Mass Pike I-90E towards Boston
Take exit 10 to Auburn I-290
Merge onto I-290E toward Worcester
See *

From East

Take Mass Pike I-90W
Take exit 10 to Auburn I-290
Take I-290E
See *

From Hartford, CT

Take I-84E to Mass Pike I-90E toward
Boston
Take exit 10 to Auburn I-290
Take I-290E
See *

From Rhode Island and points Southeast

Take I-95N to RI-146N
Follow RI-146N and bear left onto I-290E
See *

*

Take exit 17 for RT-9 toward
Worcester/Framingham
Turn left onto Belmont St RT-9W
Belmont St becomes Highland St
At rotary, take 2nd exit onto Pleasant St
Take left onto Mill St and continue straight
through first intersection
Turn right onto Brookside Ave

Providing Comfort, Convenience
and
Customer Service



www.northland.com

