

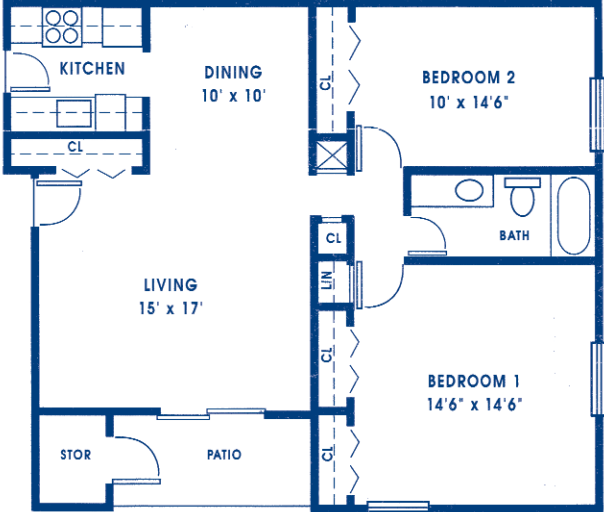
# Tatnuck Arms Apartments at Tatnuck Square

## Country Comfort, Urban Convenience

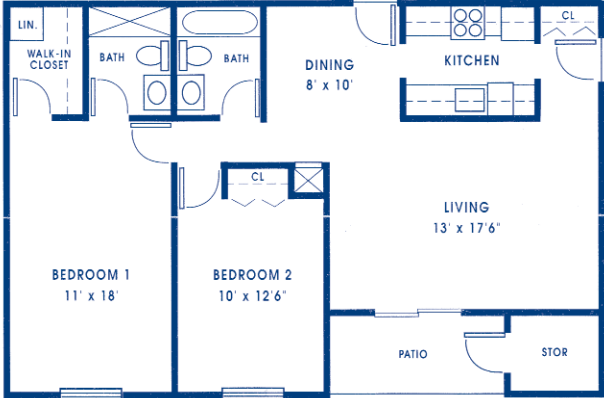
Although the view from your balcony whispers country, only a block away are restaurants, banks, a major pharmacy, beauty salons, and a variety of retail shops. Worcester State College, with a walking track that's open to the public, is just a mile away. A world-class supermarket is also nearby. The elementary school is two blocks away, and city bus lines provide quick, convenient transportation from Tatnuck Square to downtown and other key locations.

Stroll around our complex, wander through Tatnuck Square, and explore the many urban attractions and activities available in Worcester. Where else can you live in such a serene country setting, yet have all the amenities of a city just minutes away?

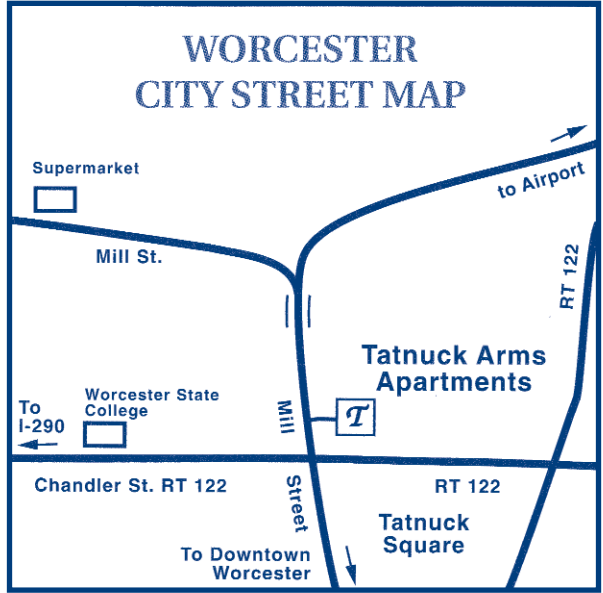
## FLOOR PLANS



**A** 2 Bedrooms/ 1 Bath  
970 - 1040 Square Feet



**B** 2 Bedrooms/ 2 Baths  
1100 Square Feet



## INTERIOR FEATURES

- Private, screened balconies
- Spacious floor plans
- \*Ceramic-tiled bathrooms
- \*Corian countertops
- Walk-in closets
- Individually controlled heat and A/C

\* in select units

## AMENITIES

- Swimming pool & sun deck
- Laundry facilities on every floor
- Security doors and intercom system
- Beautifully landscaped grounds
- 24-hour emergency maintenance service

Location!  
Location!!  
Location!!!

Tatnuck Arms Apartments is one of Worcester's best-kept secrets. Tucked away in a quiet corner of the city, our five buildings are set on eleven lovely country acres. Yet our modern complex is just ten minutes from downtown, in the desirable west side of Worcester, Massachusetts.

Feed the ducks in our brook, or walk past our lovely lawns and hedges to Tatnuck Square, a friendly mix of shops, restaurants and services. In the summer, relax at our private swimming pool.