



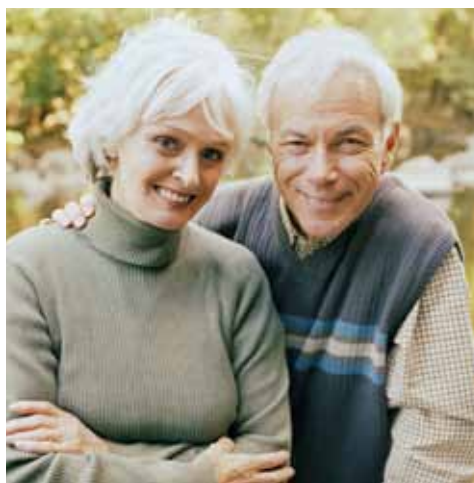
Northland at StoneHollow

Providing Comfort, Convenience & Customer Service

Come live the difference!

Northland communities throughout the U.S. are marked by outstanding locations, exceptional amenities and hands-on service. We don't just manage buildings; we own them, so we have a vested interest in the long-term performance of our communities.

What's more, every one of the people involved in managing our apartment communities is committed to fulfilling our "3 C's" promise to provide comfort, convenience, and superior customer service to all Northland residents.



Northland at StoneHollow / 11915 StoneHollow Drive / Austin, Texas 78758
P: 512.490.3000 / stonehollowmgr@northland.com
Please visit us online at www.northland.com

Northland
INVESTMENT CORPORATION



Northland at StoneHollow

Providing Comfort, Convenience & Customer Service

Interior Features

Nine-Foot Ceilings
Crown Molding
Ceramic Tile Entry
Oversized Tubs
Spacious Balconies/Patios
Washer/Dryer Connections
Well-equipped Kitchens

Community Features

Detached Garages
Covered Parking Available
Four Clothes Care Centers
Three Swimming Pools
Recreation and Fitness Center
Theater Room

Coast to Coast

Should circumstances require you to move while you're living with us, our Coast-to-Coast program can help make your relocation easy. Northland has many apartment communities throughout the U.S., we'll help you find the right apartment in the right location.*

48-Hour Maintenance

As part of our commitment to providing exceptional management services, Northland guarantees that all routine service requests reported during normal workdays will be responded to within 48 hours.* If we fail to fulfill this 48-hour service commitment, you will receive a \$25 rent credit for the following month.

Resident Referral Program

Life is better when you share it with friends. Receive a rent credit reward if your friends, colleagues or family members sign a lease.*

*Restrictions apply. Contact leasing office for further details.



Northland at StoneHollow / 11915 StoneHollow Drive / Austin, Texas 78758
P: 512.490.3000 / stonehollowmgr@northland.com
Please visit us online at www.northland.com

Northland
INVESTMENT CORPORATION



Northland at StoneHollow

Providing Comfort, Convenience & Customer Service

Limestone

1 Bedroom
1 Bathroom
602 Square Feet



Quartz

1 Bedroom
1 Bathroom
650 Square Feet



Scoria

1 Bedroom
1 Bathroom
740 Square Feet



Northland at StoneHollow

Providing Comfort, Convenience & Customer Service

Marble

1 Bedroom
1 Bathroom
838 Square Feet



Slate

1 Bedroom
1 Bathroom
912 Square Feet



Northland at StoneHollow

Providing Comfort, Convenience & Customer Service

Granite

2 Bedrooms

2 Bathrooms

1069 Square Feet

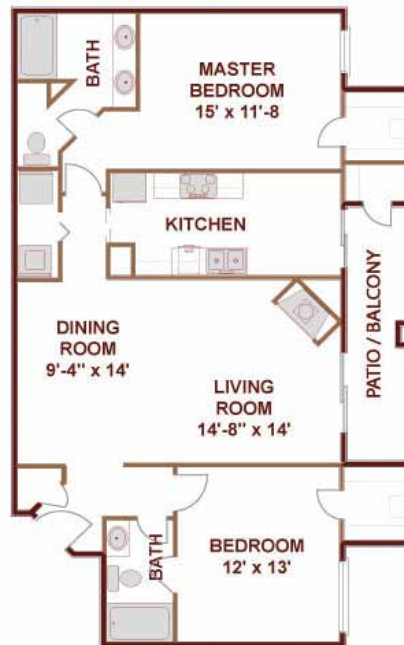


Basalt

2 Bedrooms

2 Bathrooms

1209 Square Feet



Northland at StoneHollow

Providing Comfort, Convenience & Customer Service

Sandstone

3 Bedrooms

2 Bathrooms

1352 Square Feet

