

Royal Crest Apartment Homes

INTERIOR FEATURES

- *Private balconies or patios
- *Wet bars
- *Fireplaces
- *Ceiling fans
- *Bedroom vanities
- Open floor plans
- Spacious bedrooms
- Oversized closets
- Kitchens with windows
- Cable-ready

* in select apartment homes

AMENITIES

- Clothing care centers
- Fitness center
- Swimming pool
- Clubroom
- Beautiful Texas views



Royal Crest Apartment Homes define quality living by providing the comfortable, convenient lifestyle you deserve. Set on six beautifully landscaped acres, our Tudor style community features eight unique apartment home layouts designed with royalty in mind.

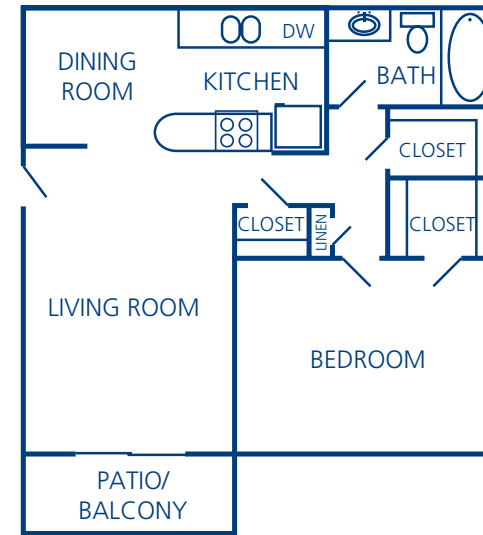
We offer extra large one, two and three bedroom floor plans, as well as spacious townhouses, to accommodate every living preference.

Our team of professionals strives to offer the best customer service in the industry by exceeding resident expectations.

Royal Crest is located close to shopping, schools, major highways and more. Enjoy the amenities of Royal Crest and classic Texas living.

Come home to the royal treatment!

FLOOR PLANS



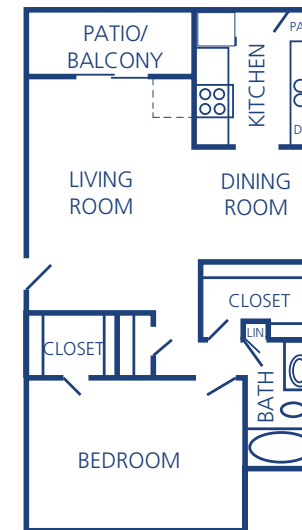
A

1 Bedroom/ 1 Bath
747 Square Feet



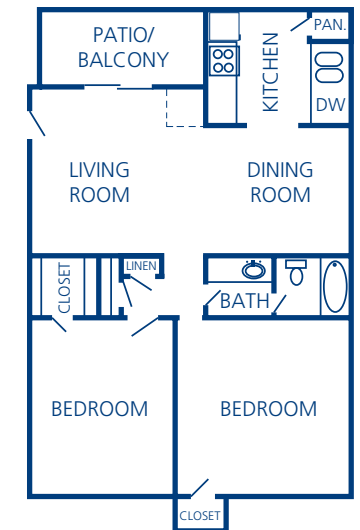
C

1 Bedroom/ 1.5 Baths
986 Square Feet



B

1 Bedroom/ 1 Bath
759 Square Feet



D

2 Bedrooms/ 1 Bath
911 Square Feet

LOCATION



Directions

From S. Broadway, turn east onto Loop E 323
 Take a right onto South Park
 Take second right onto Sybil Lane
 The leasing office is 1909 Sybil Lane

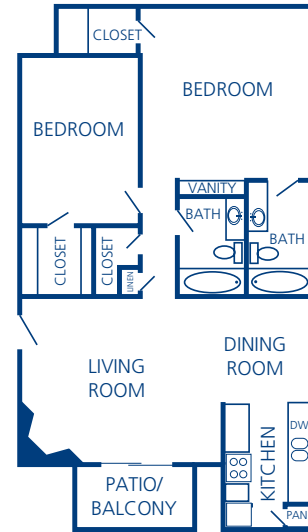
Royal Crest Apartment Homes

1909 Sybil Lane
 Tyler, TX 75703
 Phone: 903.581.6292
 Fax: 903.581.5874
royalcrestapts@northland.com



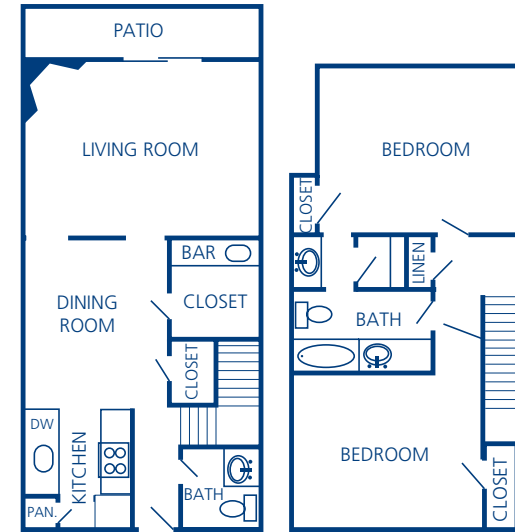
www.northland.com

FLOOR PLANS



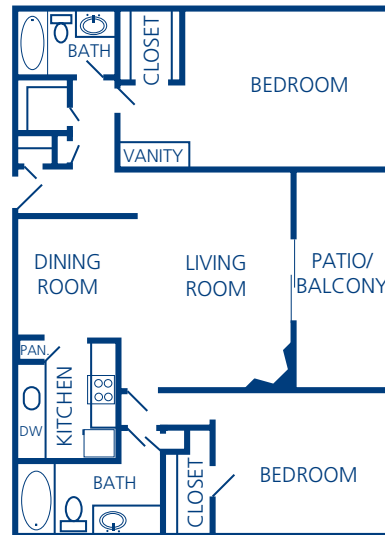
E

2 Bedrooms/ 2 Baths
 1,020 Square Feet



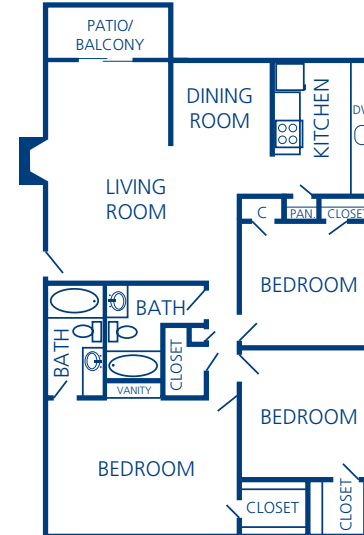
G

2 Bedrooms/ 1 1/2 Baths
 1,361 Square Feet



F

2 Bedrooms/ 2 Baths
 1,288 Square Feet



H

3 Bedrooms/ 2 Baths
 1,387 Square Feet

Providing Comfort, Convenience
 and
 Customer Service