



# Rosecrest Apartment Homes

## INTERIOR FEATURES

- \*Private balcony or patio
- Spacious closets
- Disposal
- Dishwasher
- Central air and heat
- Cable ready
- \*Linen closet
- \*Spectacular views

\* in select apartment homes

## AMENITIES

- State-of-the-art fitness center
- Controlled access
- Clubhouse & lounge
- Swimming pool
- Sundeck
- Clothing care center
- Pets welcome (breed restrictions and 25lb limit )
- Business center with internet access

Mid-town's best kept secret!

Rosecrest Apartment Homes is a ten-story, 122 unit high-rise community offering studio, one and two bedroom floor plans in a variety of layouts.

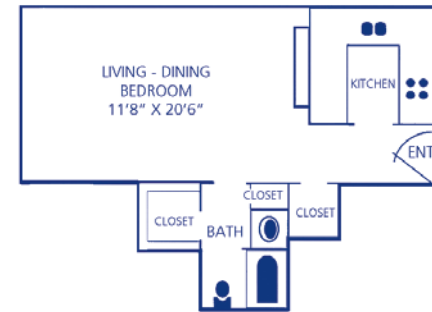
Rosecrest is situated just off of Union Avenue in a beautiful setting near some of the most sought-after, exclusive neighborhoods in the city: Central Gardens and The Evergreen Historic District. The location offers residents immediate access to all of the major shopping areas in Midtown Memphis and provides an easy commute to Downtown and the Medical Center via either Union or Madison Avenue.

Our professional management and maintenance staff are committed to providing residents with comfort, convenience and superior customer service. Treat yourself to worry-free city living in a location that can't be beat.

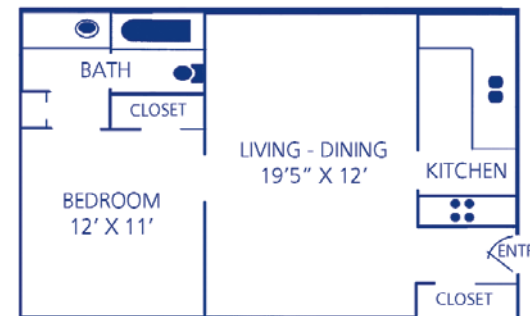
## FLOOR PLANS



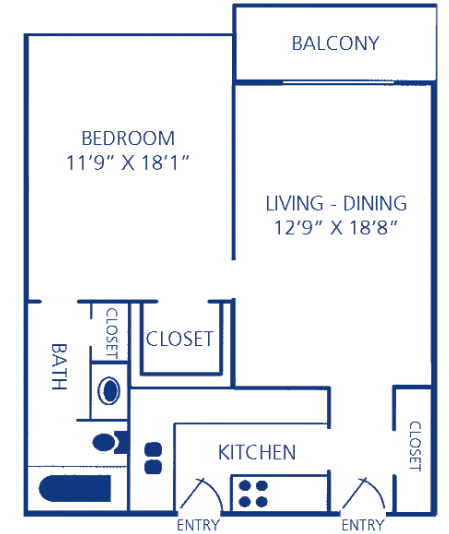
**A** Studio/ 1 Bath  
361 Square Feet



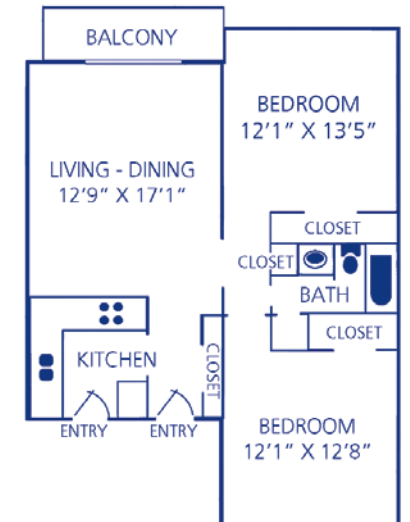
**B** Studio/ 1 Bath  
456 Square Feet



**C** 1 Bedroom/ 1 Bath  
585 Square Feet



**D** 1 Bedroom/ 1 Bath  
684 Square Feet



**E** 2 Bedrooms/ 1 Bath  
790 Square Feet

## LOCATION



## Rosecrest Apartment Homes

45 South Idlewild Street  
 Memphis, TN 38104  
 Phone: 901.278.2993  
 Fax: 901.276.5806  
[rosecrestapts@northland.com](mailto:rosecrestapts@northland.com)



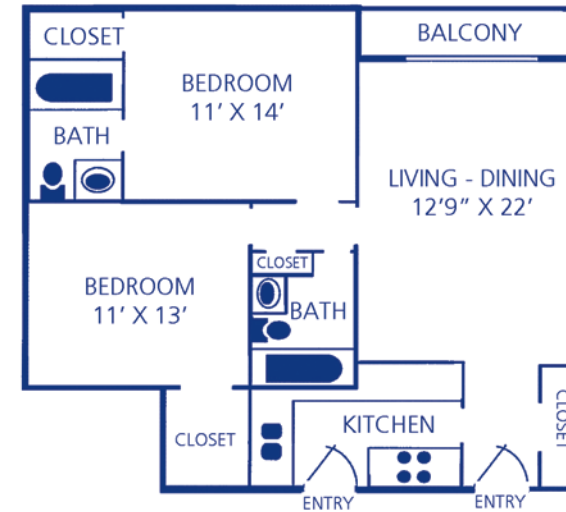
[www.northland.com](http://www.northland.com)

## AREA ATTRACTIONS

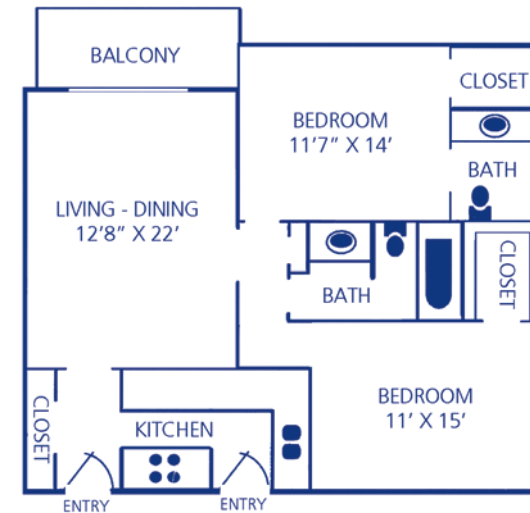
- Graceland
- Civil Rights Museum
- Memphis Zoo
- The Pink Palace Museum and Planetarium
- The Children's Museum of Memphis
- Chucalissa Archaeological Museum
- Mud Island River Park
- Sun Studio Music guided tour
- Peabody Place Museum of Chinese Art
- The Stax Museum of American Soul Music
- Dixon Gallery and Gardens Art Museum
- Orpheum Theater
- Cannon Center for the Performing Arts
- South Main Historical District
- The Casinos at Tunica
- Beale Street
- Memphis Queen Riverboat Dinner Cruises
- Hard Rock Cafe
- Blue's City Cafe
- Peabody Place
- FedExForum - home of the Memphis Tigers, Grizzlies
- AutoZone Park - home of the Redbirds



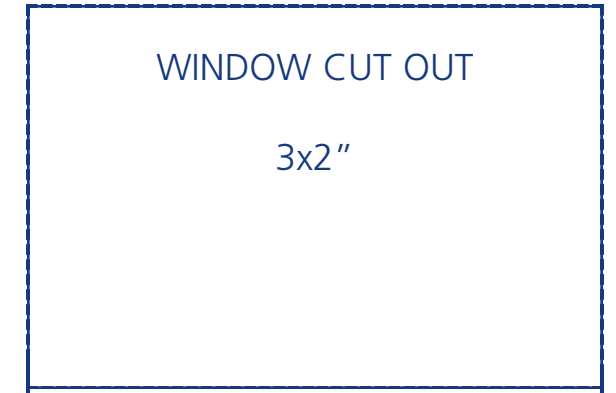
## FLOOR PLANS



**F** 2 Bedrooms/ 2 Baths  
 861 Square Feet



**G** 2 Bedrooms/ 2 Baths  
 912 Square Feet



Providing Comfort, Convenience  
 and  
 Customer Service



BUSINESS CARD

3.5 x 2"

