

Randolph Park Apartment Homes

INTERIOR FEATURES

- *Screened porches and sunrooms
- *Courtyard views
- *Washer/dryer connections
- *Private patios
- *Loft bedrooms
- *Linen closets
- Walk-in closets
- Storm doors and windows

- * in select apartment homes

AMENITIES

- Two swimming pools
- Picnic/barbecue area
- Gazebo
- Laundry center
- 24-hour fitness center
- Beautifully landscaped grounds
- Established neighborhood
- Pet friendly

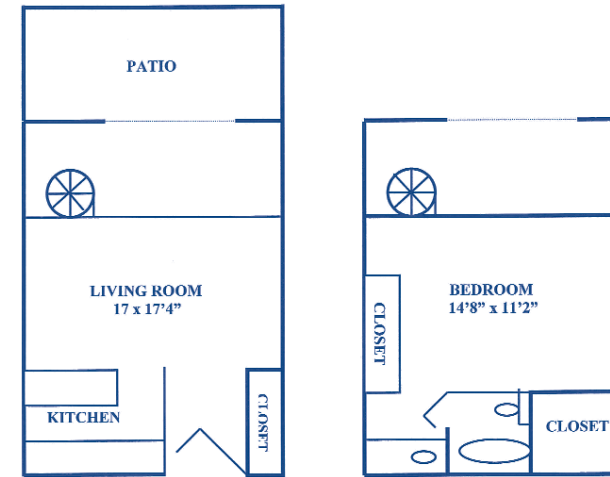
Randolph Park Apartment Homes is adjacent to Cotswold Shopping Center, fine dining and casual favorites, and minutes from Uptown as well as South Park. The convenience of our location is sure to please any lifestyle and we offer a multitude of floor plans to accommodate every residential preference.

Choose from our large one, two and three bedroom town homes and garden style apartments. All homes feature private patios, balconies, or screened porches and generous closet space. Certain apartment homes also have "bonus rooms" that can be used for an office or den.

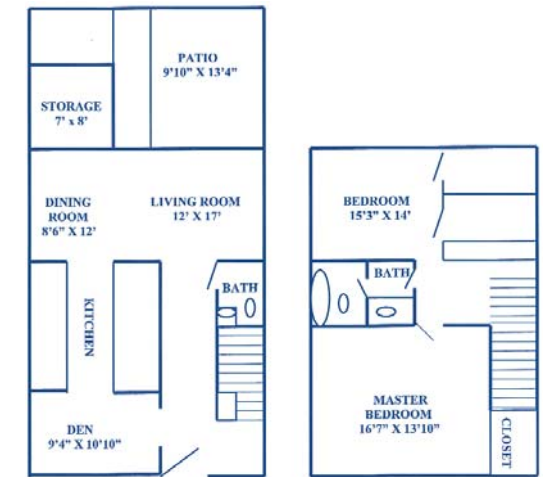
While many of our apartments have washer/dryer hookups, there is also a laundry center on-site for added convenience. Our community has superior facilities and a friendly staff that is always glad to assist!

Come by for a visit and see for yourself why Randolph Park should be your next home.

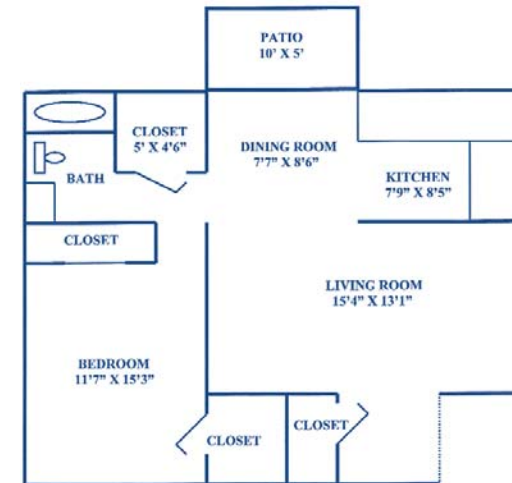
FLOOR PLANS



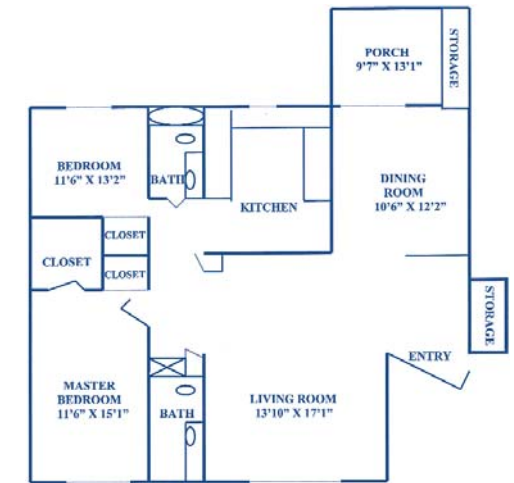
A 1 Bedroom/ 1 Bath
Townhouse
935 Square Feet



C 2 Bedrooms/ 1.5 Baths
Townhouse
1,433 Square Feet

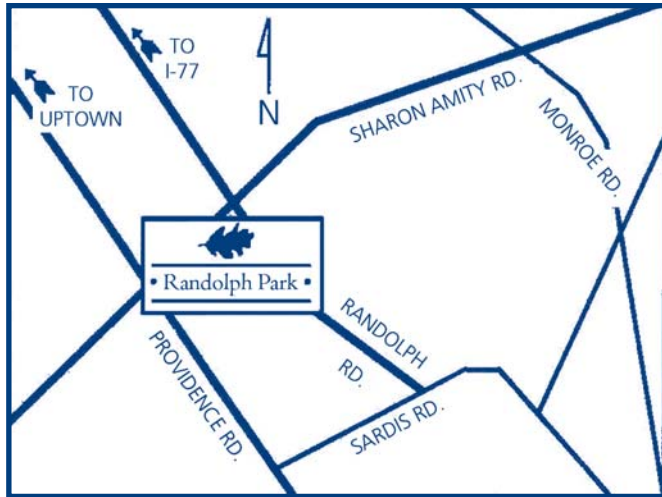


B 1 Bedroom/ 1 Bath
Garden
754 Square Feet



D 2 Bedrooms/ 2 Baths
Garden
1,300 Square Feet

LOCATION



Randolph Park Apartment Homes

4516 Randolph Road
Charlotte, NC 28211
Phone: 704.366.9000
Fax: 704.366.3223
randolphpark@northland.com



www.northland.com



DIRECTIONS

From Rock Hill, SC

Take Rt 77 North toward Charlotte
Take exit 5 for Tyvola Rd
Bear left onto Tyvola and follow for 3 miles
Continue on Fairview Rd for 1.5 miles
Turn left onto Randolph Rd
Randolph Park will be on your left a half mile down

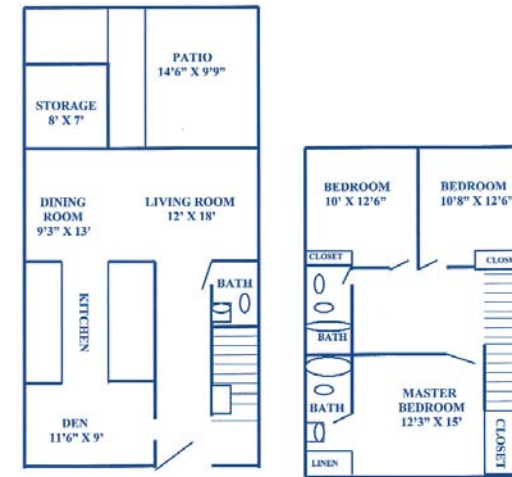
From Raleigh

Take Rt 40 West towards Durham/Cary
Take Rt 85 South toward Charlotte
Take exit 45A, WT Harris Blvd and follow WT Harris Blvd for 6 miles
Continue onto Sharon Amity Rd for 6 miles
Turn left onto Randolph Rd
Randolph Park will be on the right

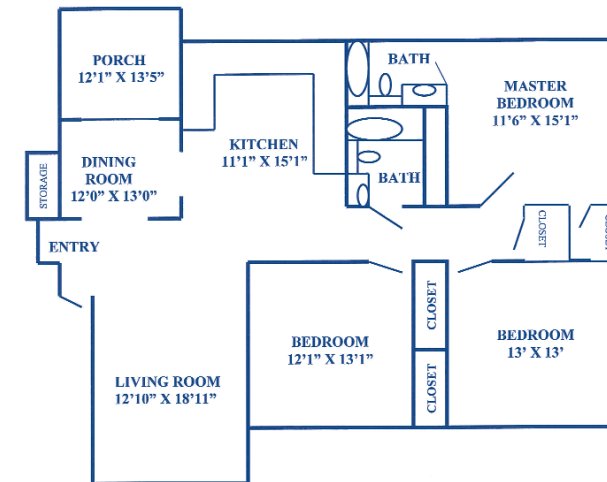
From Asheville

Take Rt 240 East to Statesville and take exit onto Rt 40 East
Take exit 123 and merge onto US-321 South
Bear right onto Rt 85 North towards Charlotte
Take exit 30 onto Rt 485 South towards Pineville
Take exit 9/Wilkinson Blvd and follow Wilkinson for 6.5 miles
Continue onto Rt 277 North for 2 miles
Take exit 2A and turn right onto 3rd St
Turn left onto Independence and right onto 4th St
Take Randolph Rd approximately 3 miles -
Randolph Park will be on the left

FLOOR PLANS



E 3 Bedrooms/ 2.5 Baths
Townhouse
1,533 Square Feet



F 3 Bedrooms/ 2 Baths
Garden
1,600 Square Feet

Providing Comfort, Convenience
and
Customer Service