

## WINDOW CUT OUT

For company name and logo

## INTERIOR FEATURES

- \*Screened porches and sunrooms
- \*Courtyard views
- \*Washer/dryer connections
- \*Private patios
- \*Loft bedrooms
- \*Linen closets
- Walk-in closets
- Storm doors and windows

\* in select apartment homes

## AMENITIES

- Two swimming pools
- Picnic/barbecue area
- Gazebo
- Laundry center
- 24-hour fitness center
- Beautifully landscaped grounds
- Established neighborhood
- Pet friendly

# Randolph Park Apartment Homes

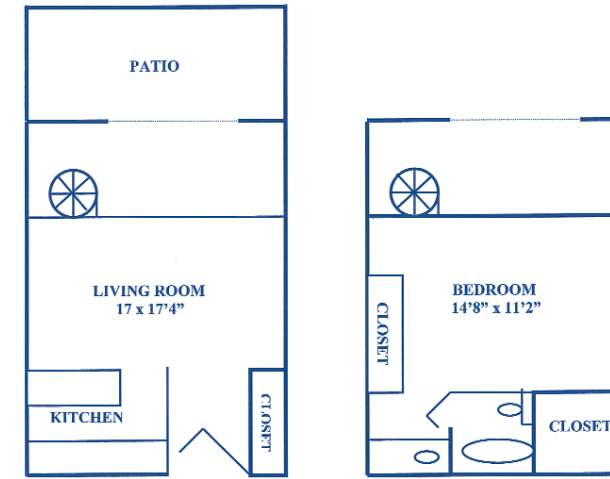
Randolph Park Apartment Homes is adjacent to Cotswold Shopping Center, fine dining & casual favorites, and minutes from Uptown as well as South Park. The convenience of our location is sure to please any lifestyle and we offer a multitude of floor plans to accommodate every residential preference.

Choose from our large one, two and three bedroom town homes and garden style apartments. All homes feature private patios, balconies, or screened porches and generous closet space. Certain apartment homes also have bonus rooms that can be used for an office or den.

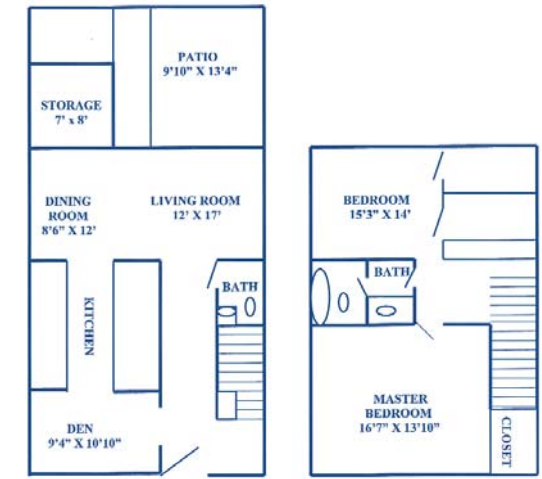
While many of our apartments have washer/dryer hookups, there is also a laundry center on-site for added convenience. Our community has superior facilities and a friendly staff that is always glad to assist!

Come by for a visit and see for yourself why Randolph Park should be your next home.

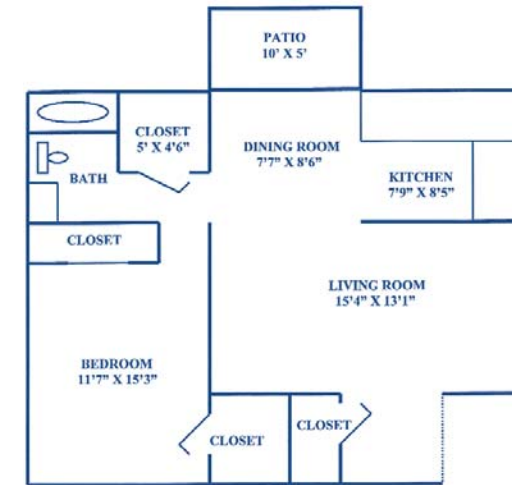
## FLOOR PLANS



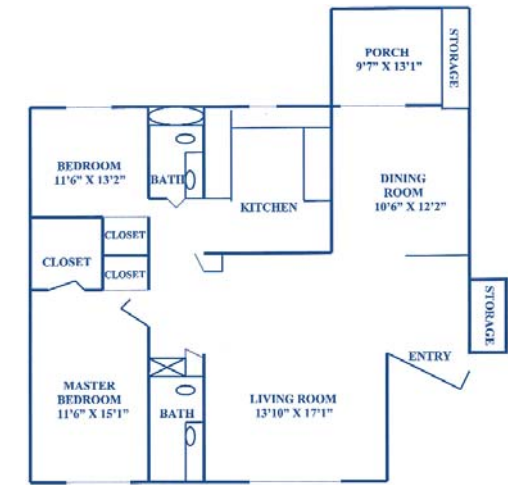
**A** 1 Bedroom/ 1 Bath  
Townhouse  
935 Square Feet



**C** 2 Bedrooms/ 1.5 Baths  
Townhouse  
1,433 Square Feet

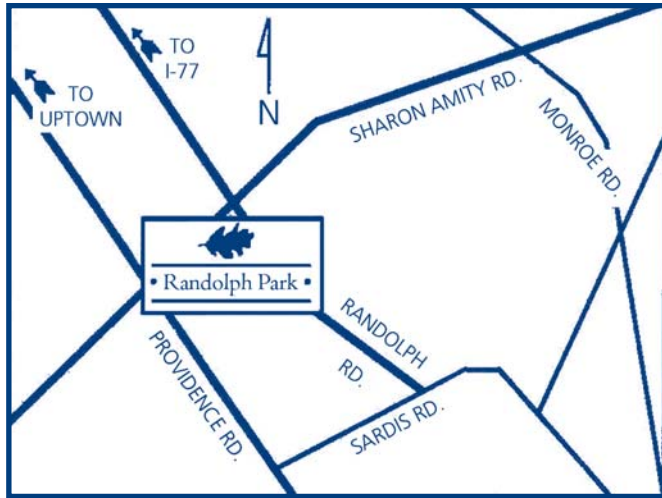


**B** 1 Bedroom/ 1 Bath  
Garden  
754 Square Feet



**D** 2 Bedrooms/ 2 Baths  
Garden  
1,300 Square Feet

## LOCATION



## Randolph Park Apartment Homes

4516 Randolph Road  
Charlotte, NC 28211  
Phone: 704.366.9000  
Fax: 704.366.3223  
randolphpark@northland.com



www.northland.com



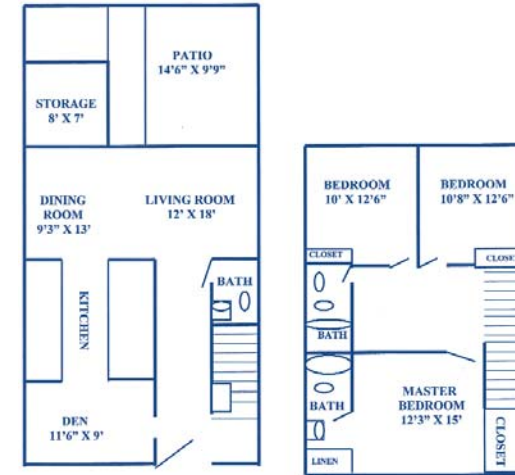
## DIRECTIONS

**From Rock Hill, SC**  
Take Rt 77 North toward Charlotte  
Take exit 5 for Tyvola Rd  
Bear left onto Tyvola and follow for 3 miles  
Continue on Fairview Rd for 1.5 miles  
Turn left onto Randolph Rd  
Randolph Park will be on your left a half mile down

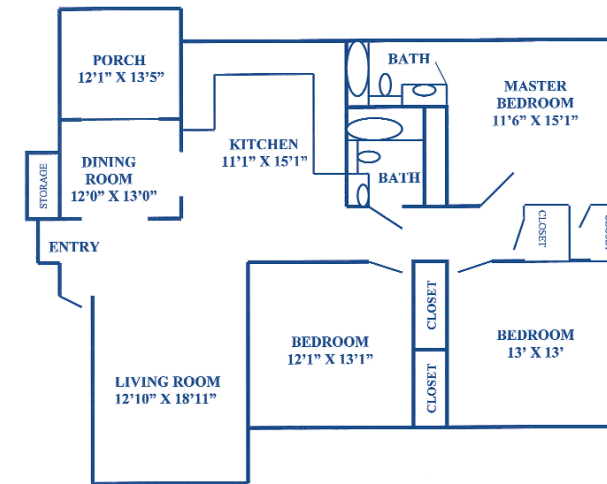
**From Raleigh**  
Take Rt 40 West towards Durham/Cary  
Take Rt 85 South toward Charlotte  
Take exit 45A, WT Harris Blvd and follow WT Harris Blvd for 6 miles  
Continue onto Sharon Amity Rd for 6 miles  
Turn left onto Randolph Rd  
Randolph Park will be on the right

**From Asheville**  
Take Rt 240 East to Statesville and take exit onto Rt 40 East  
Take exit 123 and merge onto US-321 South  
Bear right onto Rt 85 North towards Charlotte  
Take exit 30 onto Rt 485 South towards Pineville  
Take exit 9/Wilkinson Blvd and follow Wilkinson for 6.5 miles  
Continue onto Rt 277 North for 2 miles  
Take exit 2A and turn right onto 3rd St  
Turn left onto Independence and right onto 4th St  
Take Randolph Rd approximately 3 miles - Randolph Park will be on the left

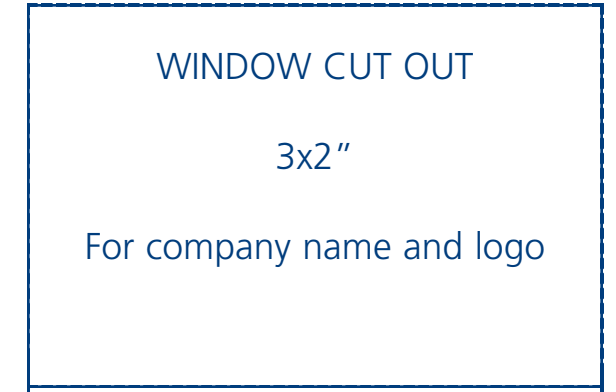
## FLOOR PLANS



**E** 3 Bedrooms/ 2.5 Baths  
Townhouse  
1,533 Square Feet



**F** 3 Bedrooms/ 2 Baths  
Garden  
1,600 Square Feet



Providing Comfort, Convenience  
and  
Customer Service



BUSINESS CARD

3.5 x 2"

Insert Here

