

FLOOR PLANS



Welcome to The Pavilions Apartment Homes, located in beautiful Manchester. The Pavilions offers residents an escape from the every day. An array of thoughtfully designed floor plans, combined with our state-of-the-art amenities and convenient services, make your life at The Pavilions time well spent.

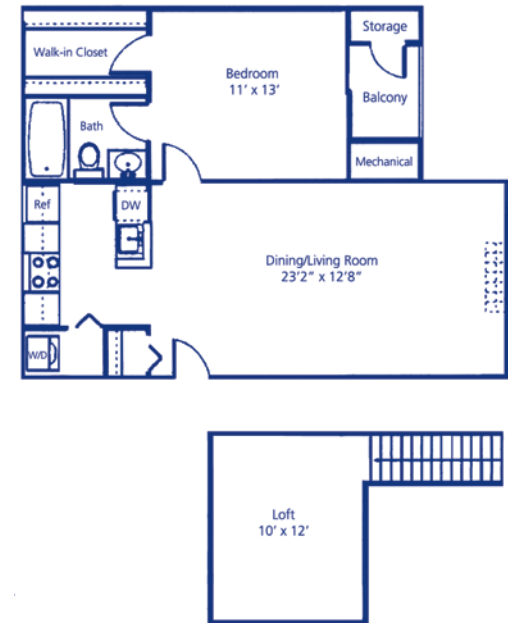
INTERIOR FEATURES

- *Wood-burning fireplaces
- *Vaulted ceilings
- *Scenic views
- *Carport parking
- Washer and dryer hookups

* in select apartment homes

AMENITIES

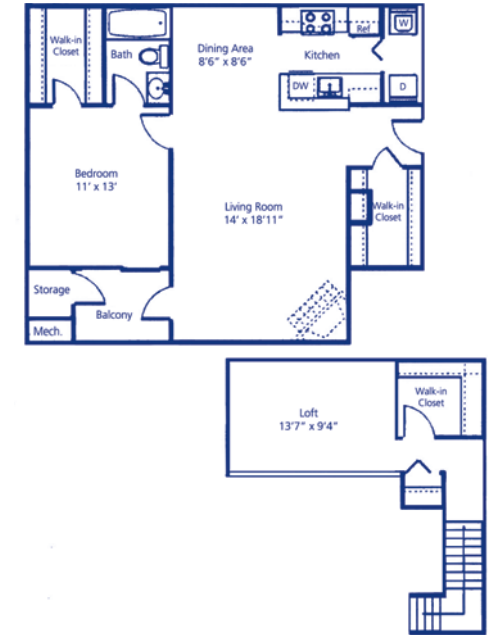
- Two outdoor swimming pools
- 24-hour emergency service
- Two tennis courts
- Three indoor racquetball courts
- 24-hour fitness center
- Dance studio with aerobic classes
- Indoor basketball and volleyball courts
- Outdoor sport court
- Playground and tot lot
- Community conference room & library
- Beautiful clubhouse



“The Linden”

1 Bedroom/ 1 Bath

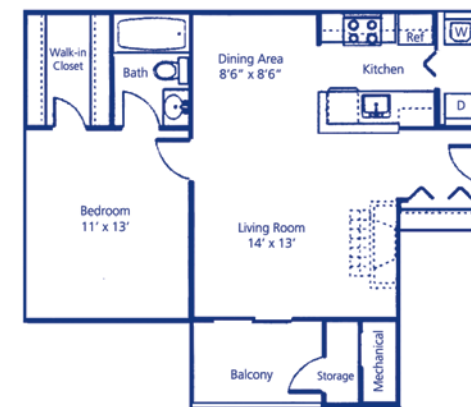
688 sq. ft. / with Loft Option 822 sq. ft.



“The Oakwood”

1 Bedroom/ 1 Bath

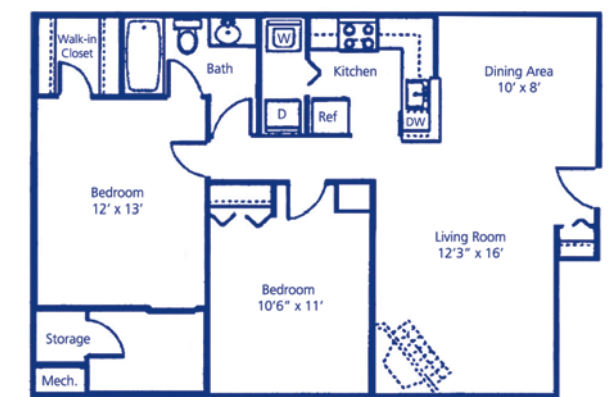
853 sq. ft. / with Loft Option 1,045 sq. ft.



“The Hawthorne”

1 Bedroom/ 1 Bath

730 sq. ft.

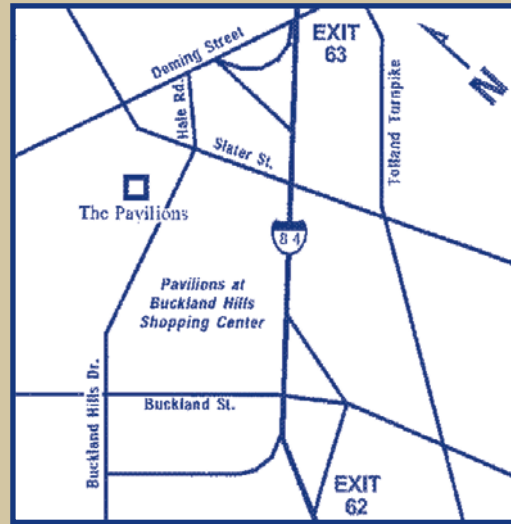


“The Magnolia”

2 Bedrooms/ 1 Bath

920 sq. ft.

DIRECTIONS



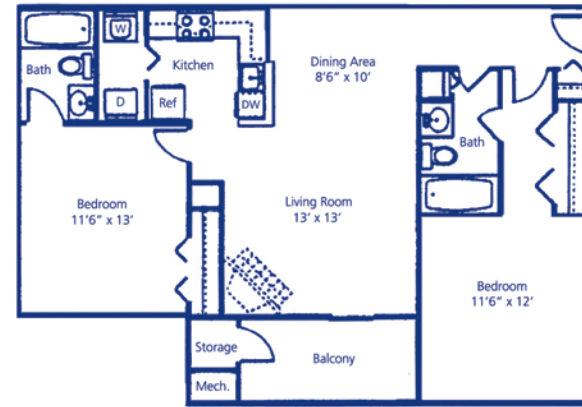
I-84 East to Exit 62, take a left and then a right onto Buckland Hills Drive. The Pavilions will be on the left. Take the first entrance, West Village.

I-84 West to Exit 63, take a left and then a left onto Hale Road. The Pavilions will be on the right, Take the second entrance, West Village.

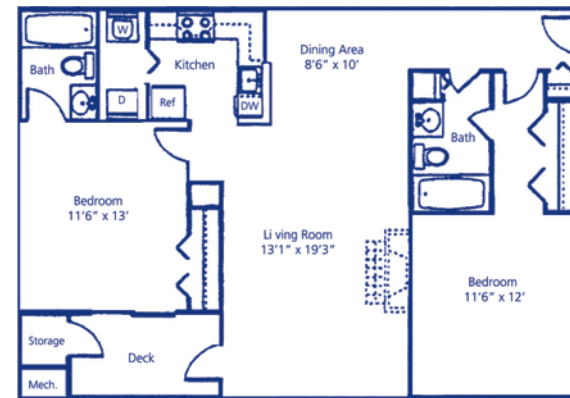
The Pavilions Apartment Homes

345 Buckland Hills Drive, Suite 100
Manchester, CT 06042
Phone: 860.644.4001
Fax: 860.644.6294
thepavilionsmgr@northland.com

FLOOR PLANS



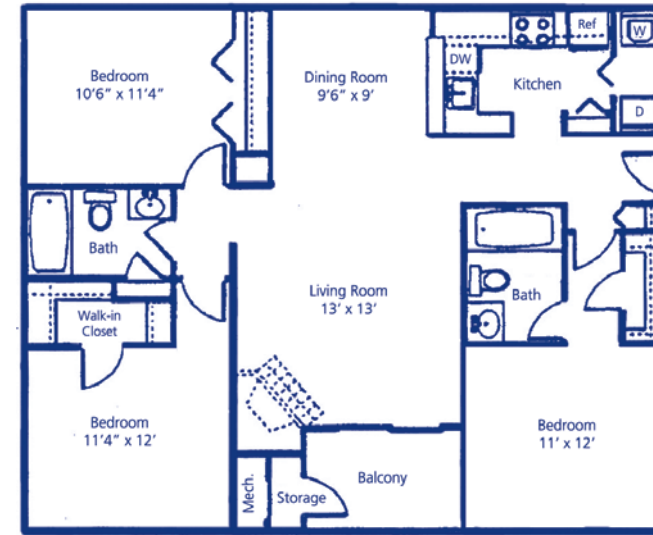
"The Basswood"
2 Bedrooms/ 2 Baths
1,052 sq. ft.



"The Willow"
3 Bedrooms/ 2 Baths
1,246 sq. ft.



"The Ashwood"
2 Bedrooms/ 2 Baths
1,112 sq. ft. / with Loft Option 1,294 sq. ft.



The Pavilions Apartment Homes



Providing Comfort, Convenience
and Customer Service