

WINDOW CUT OUT

The Meadows Apartment Homes

INTERIOR FEATURES

- Central air conditioning
- Gas range
- Dishwasher
- Cable TV
- Free gas heating and hot water

AMENITIES

- Swimming pool
- Waterfront picnic area
- Sand volleyball court
- Barbecue grills
- Private clubhouse
- Large air conditioned laundry facility
- Children's playground
- View of Cedar Bayou



The Community

The Meadows is a tranquil, comfortable, twenty-acre community nestled in a private neighborhood. One, two and three bedroom designs are available.

Devotion to Service

Our professional management staff is dedicated to delivering personal service in a quality home environment. Residents are top priority!

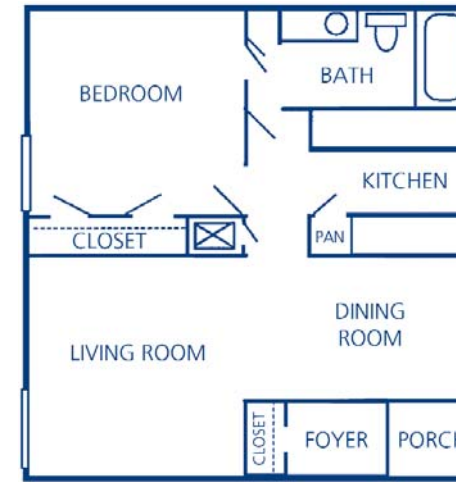
For Our Residents

The large lush courtyards are perfect for barbecues, picnics or relaxation. The property also boasts a waterfront view of Cedar Bayou.

Location

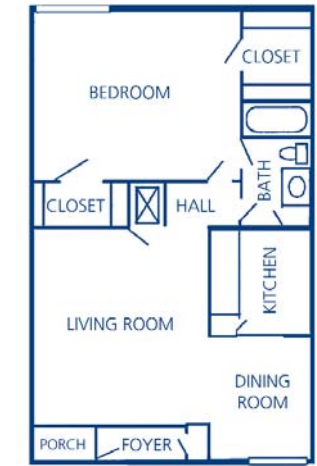
Residents enjoy close proximity to grocery stores, schools, shopping malls, hospitals, Lee College, Baytown Bridge, I-10 and Texas Highway 146.

FLOOR PLANS



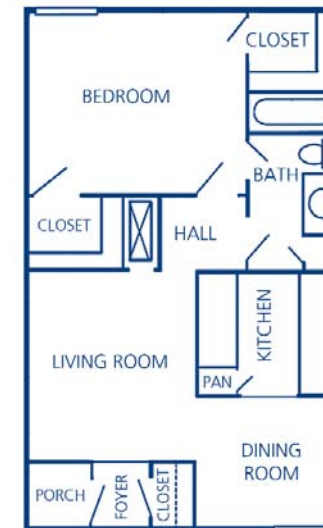
A

1 Bedroom/ 1 Bath
585 Square Feet



C

1 Bedroom/ 1 Bath
704 Square Feet



B

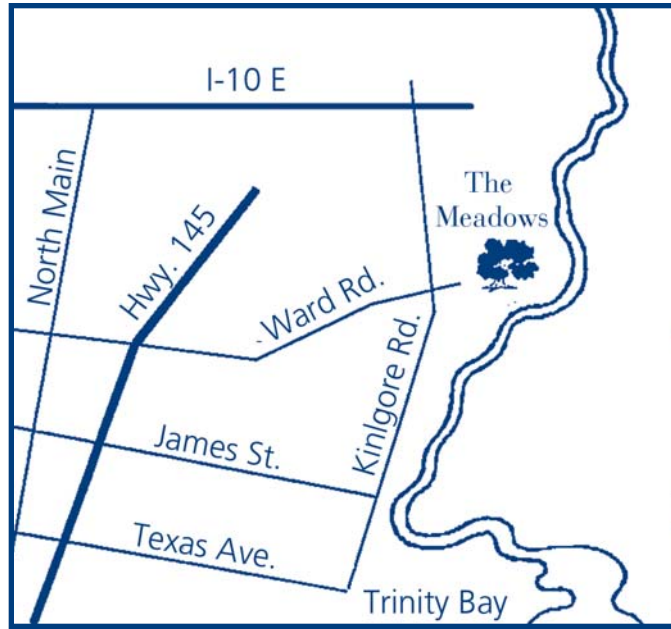
1 Bedroom/ 1 Bath
630 Square Feet



D

2 Bedrooms/ 1.5 Baths
781 Square Feet

LOCATION



The Meadows Apartment Homes

2700 Ward Road
Baytown, TX 77520
Phone: 281.427.5807
Fax: 281.837.1794
meadowsapts@northland.com



www.northland.com

DIRECTIONS

From Houston

I-10 East to TX 330-Spur-E via exit 788
Continue straight onto Decker Drive
Turn left at N. Robert Lanier Drive
Merge onto TX-146 N/TX-201-Loop N
via the Texas 146 ramp
Exit Alexander Road, right exit from TX-
146 N
Turn right on Alexander Drive and turn
left on Ward Road
Follow Ward Road to the end

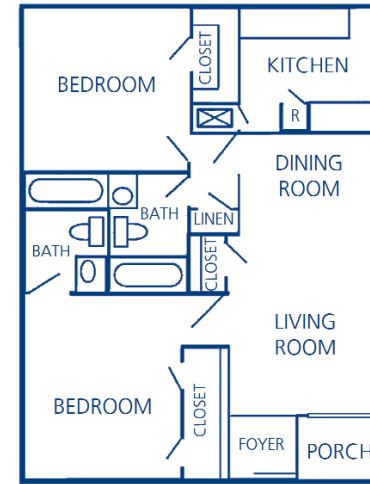
From Beaumont

Take the I-10 West ramp to Houston
Merge onto I-10 via the TX-146 exit 797
to Mont Belvieu/Baytown
Turn left at TX-146 South
Turn left at Alexander Drive
Turn left on Ward Road and follow to
the end

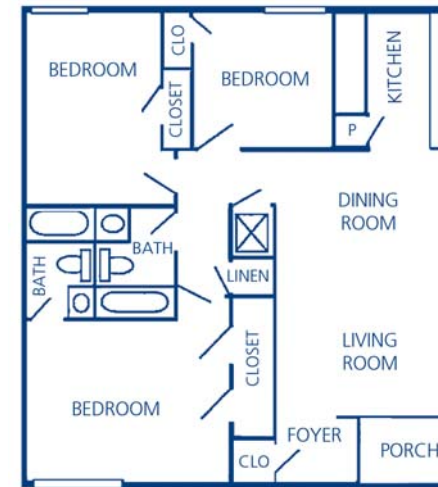
From Dayton

Head southwest on US-90 toward N.
Winfree St
Turn left at TX-146
Turn left at Alexander Drive
Turn left on Ward Road and follow to
the end

FLOOR PLANS



E 2 Bedrooms/ 2 Baths
848 Square Feet



F 3 Bedrooms/ 2 Baths
1,059 Square Feet

WINDOW CUT OUT

3x2"

Providing Comfort, Convenience
and
Customer Service

BUSINESS CARD

3.5 x 2"