

Madison at the Arboretum Apartment Homes

INTERIOR FEATURES

*Bay windows or floor-to-ceiling windows

*Bookshelves

*Breakfast bar

Ceiling fans

Crown molding

*Garden tub

Gourmet kitchen

Linen closets

*Private patio or balcony

Spacious closets

Vaulted ceilings

Wood-burning fireplace with tiled hearth

* in select apartment homes

AMENITIES

Business center

Covered parking

Extra storage

Fitness center

Heated jacuzzi

Hiking trails/jogging trails

Outdoor barbecue grill and picnic area

Pet friendly

Picnic area with BBQ grills

Swimming pool

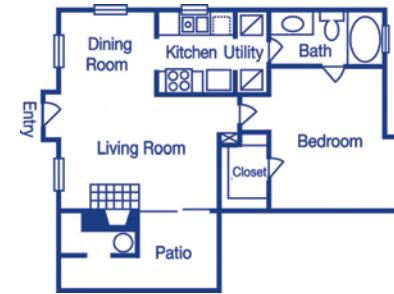
Madison at the Arboretum mixes an old fashioned neighborhood with a modern sense of style. Quietly nestled in the rolling hills and lush woodlands of northwest Austin, the community is located in a natural setting highlighted by parks, lakes and trails. Residents enjoy an outdoor leisure lifestyle coupled with the convenience of Austin's fabulous urban amenities.

Our spacious floor plans were designed with luxury and comfort in mind, offering open layouts perfect for entertaining. Choose from stylish one and two bedroom apartment homes available in a variety of configurations. Adding convenience to comfort, our fully-equipped kitchens can accommodate the culinary expertise of novice cooks to gourmet chefs.

Take in the dramatic views of both the canyon and the Great Hills Golf Course as you relax on your balcony listening to nature's soundtrack.

Treat yourself to divine living in the "Live Music Capital of the World!"

FLOOR PLANS



1 Bedroom/ 1 Bath
640 Square Feet
"The Hilltop"



1 Bedroom/ 1 Bath
792 to 805 Square Feet
"The Sanctuary"



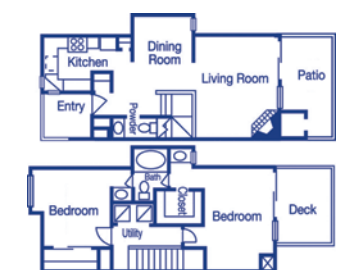
1 Bedroom/ 1 Bath
714 Square Feet
"The Ridgelea"



1 Bedroom/ 1 Bath
834 Square Feet
"The Rolling Wood"



1 Bedroom/ 1 Bath
743 to 756 Square Feet
"The Aspen"



2 Bedrooms/ 1 Bath
1,088 Square Feet
"The Vista Ridge"

LOCATION



Madison at the Arboretum Apartment Homes

10307 Morado Cove
Austin, TX 78759

Phone: 512.346.3215

Fax: 512.346.9444

madisonarboretumapts@northland.com



www.northland.com

DIRECTIONS

From North Austin

Take I-35 South

Turn right on Braker Lane

Continue on Braker to Morado Circle

Turn left on Morado Cove

From South Austin

Take I-35 North

Take US-183 North

Turn left on Braker Lane

Continue on Braker Lane to Morado Circle

Turn left on Morado Cove

From Cedar Park

Take US-183 South

Turn right on Braker Lane

Continue on Braker Lane to Morado Circle

Turn left on Morado Cove

AREA ATTRACTIONS

Arboretum Hills Golf Course

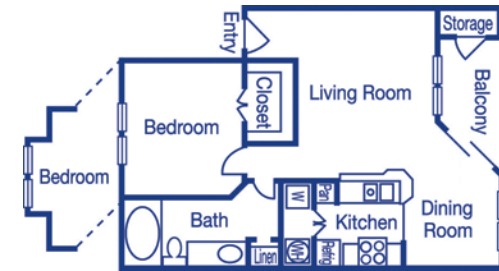
Arboretum Retail

The Domain - world class shopping

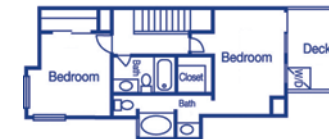
Downtown fine dining/shopping



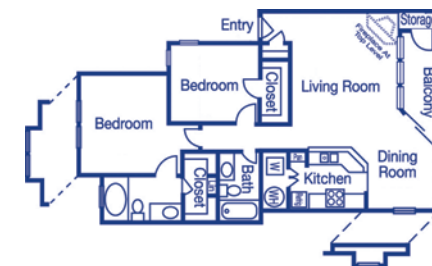
FLOOR PLANS



2 Bedrooms/ 2 Baths
1,050 Square Feet
"The Highland "



2 Bedrooms/ 2 Baths
1,150 Square Feet
"The Overlook "



2 Bedrooms/ 2 Baths
1,142 to 1,155 Square Feet
"The Plateau"

Providing Comfort, Convenience
and
Customer Service