

Great Hills Apartment Homes

FLOOR PLANS

INTERIOR FEATURES

- *Wood-burning fireplaces with tile hearths
- Ceiling fans
- *Vaulted ceilings
- Full-size washer/dryer connections
- Ceramic tile entries
- Ceramic tubs
- Walk-in closets
- Breakfast bars
- *Bookshelves
- *Linen closets
- High-speed internet access available
- Patios or balconies
- * in select apartment homes

AMENITIES

- Two pools with multi-level sun decks
- Exercise facility/weight room
- Beautiful gazebo
- 25 acres of greenbelts
- Scenic wooded and canyon views
- Two laundry facilities
- Assigned covered parking available
- Recreational vehicle parking available

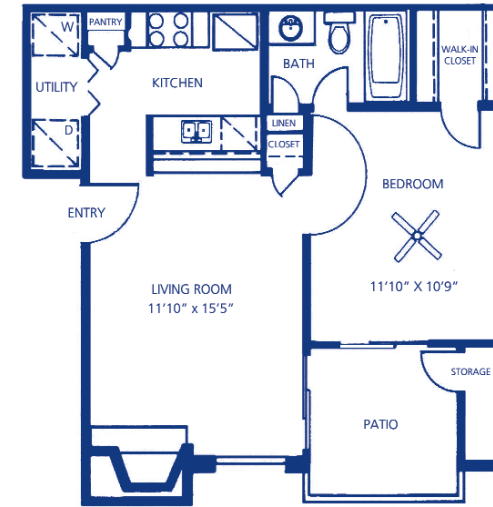
LOCATION

The beautiful foothills of Austin offer the perfect setting for Great Hills. Thoughtfully nestled among the sights, sounds and panoramic views of Texas Hill Country, you'll forget that the heartbeat of the city is only moments away.

Getting anywhere in town is easy, because Great Hills is located near the intersections of Highway 183, Mopac Expressway and Loop 360. Fine dining, exquisite shopping, outstanding entertainment and much more are all nearby at the Arboretum.

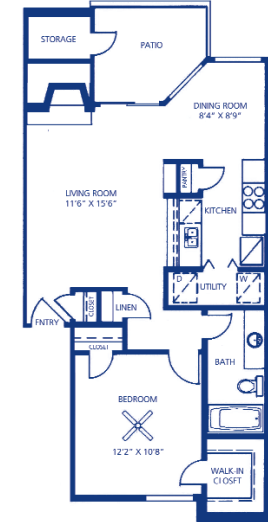
COMMUNITY

Great Hills was planned with excellence in mind. Beautiful landscaping and attractive amenities blend to create the ideal living environment. The community is meticulously maintained with a commitment to quality that exceeds our residents' expectations.



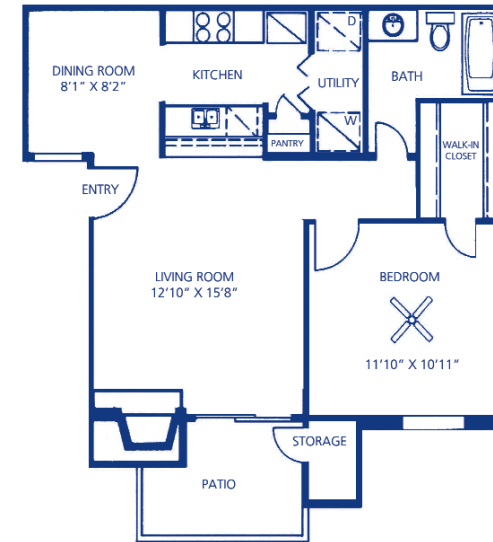
A-1

1 Bedroom/ 1 Bath
540 Square Feet



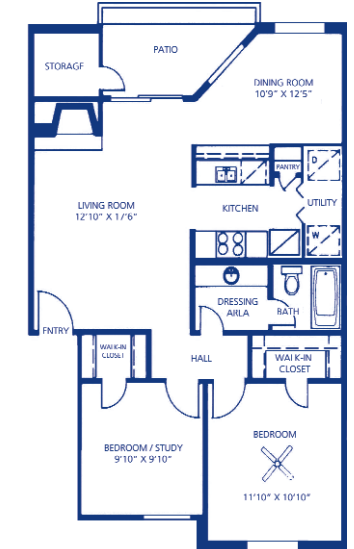
A-3

1 Bedroom/ 1 Bath
700 Square Feet



A-2

1 Bedroom/ 1 Bath
660 Square Feet



B-1

2 Bedrooms/ 1 Bath
820 Square Feet

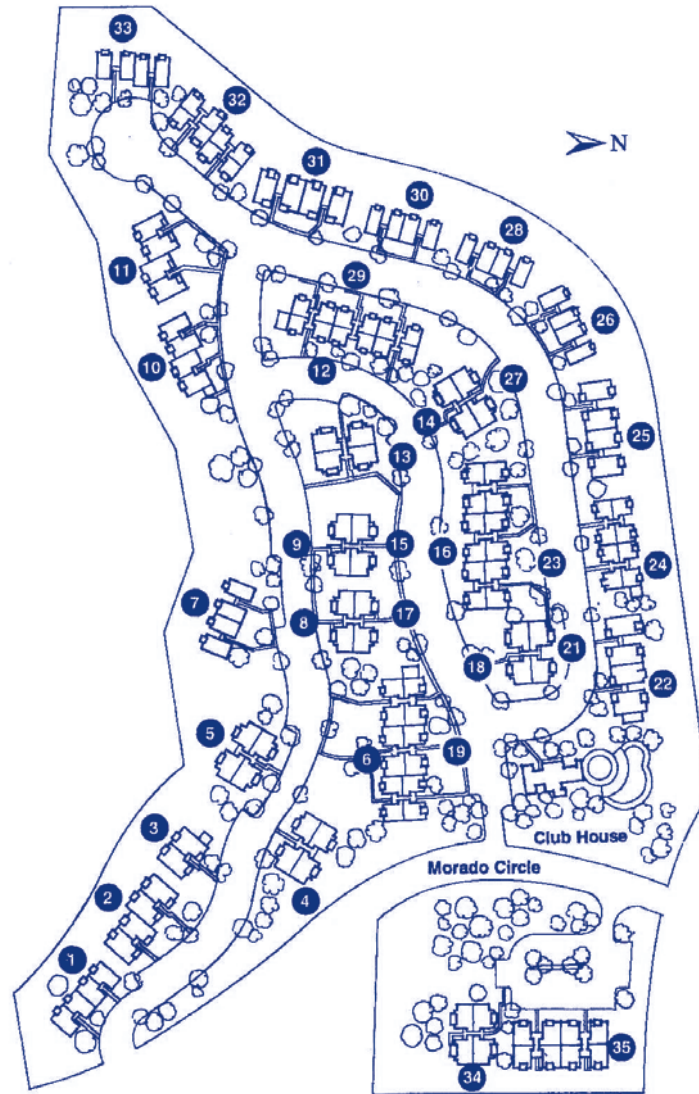
LOCATION



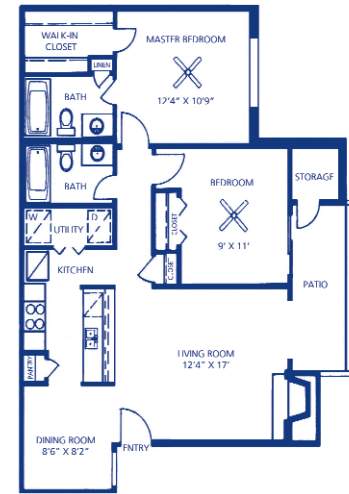
Great Hills Apartment Homes

10610 Morado Circle
Austin, TX 78759
Phone: 512.346.9366
Fax: 512.346.7906
greathillsmgr@northland.com

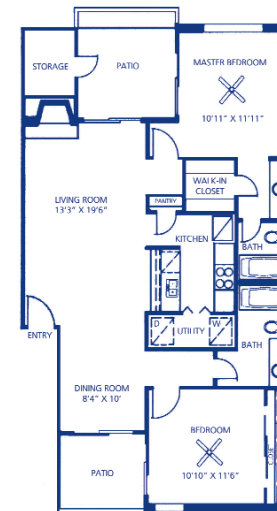
COMMUNITY MAP



FLOOR PLANS



B-2 2 Bedrooms/ 2 Baths
900 Square Feet



B-3 2 Bedrooms/ 2 Baths
1,020 Square Feet

Providing Comfort, Convenience
and
Customer Service



www.northland.com

