

# FLOOR PLANS

# Great Hills Apartment Homes

## WINDOW CUT OUT

For company name and logo

## INTERIOR FEATURES

- \*Wood-burning fireplaces with tile hearths
- Ceiling fans
- \*Vaulted ceilings
- Full-size washer/dryer connections
- Ceramic tile entries
- Ceramic tubs
- Walk-in closets
- Breakfast bars
- \*Bookshelves
- \*Linen closets
- High-speed internet access available
- Patios or balconies

\* in select apartment homes

## AMENITIES

- Two pools with multi-level sun decks
- Exercise facility/weight room
- Beautiful gazebo
- 25 acres of greenbelts
- Scenic wooded and canyon views
- Two laundry facilities
- Assigned covered parking available
- Recreational vehicle parking available

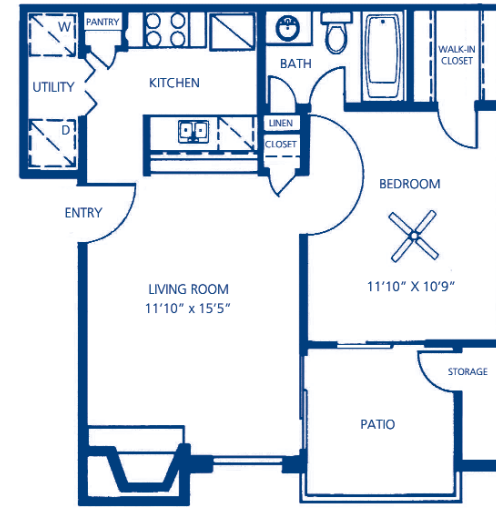
## LOCATION

The beautiful foothills of Austin offer the perfect setting for Great Hills. Thoughtfully nestled among the sights, sounds and panoramic views of Texas Hill Country, you'll forget that the heart-beat of the city is only moments away.

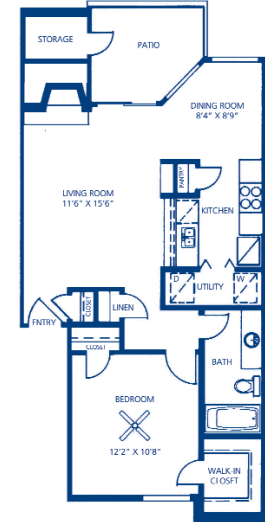
Getting anywhere in town is easy, because Great Hills is located near the intersections of Highway 183, Mopac Expressway and Loop 360. Fine dining, exquisite shopping, outstanding entertainment and much more are all nearby at the Arboretum.

## COMMUNITY

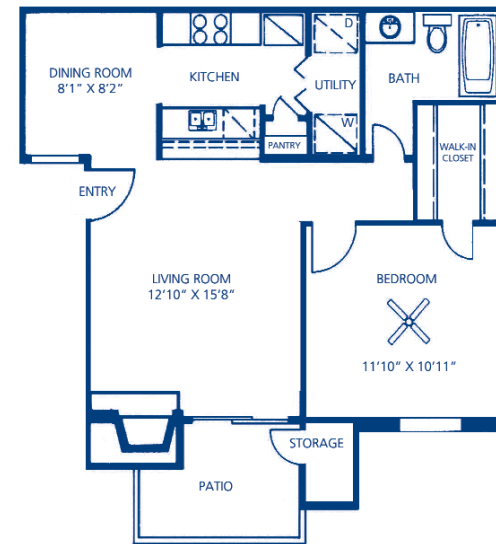
Great Hills was planned with excellence in mind. Beautiful landscaping and attractive amenities blend to create the ideal living environment. The community is meticulously maintained with a commitment to quality that exceeds our residents' expectations.



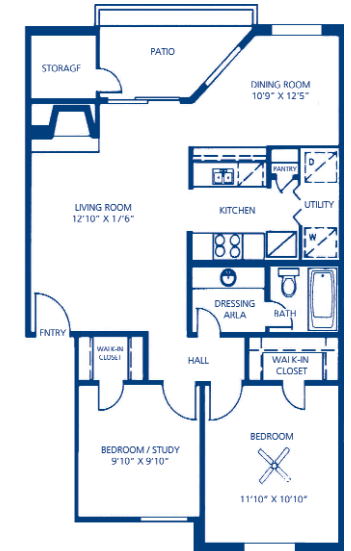
**A-1** 1 Bedroom/ 1 Bath  
540 Square Feet



**A-3** 1 Bedroom/ 1 Bath  
700 Square Feet

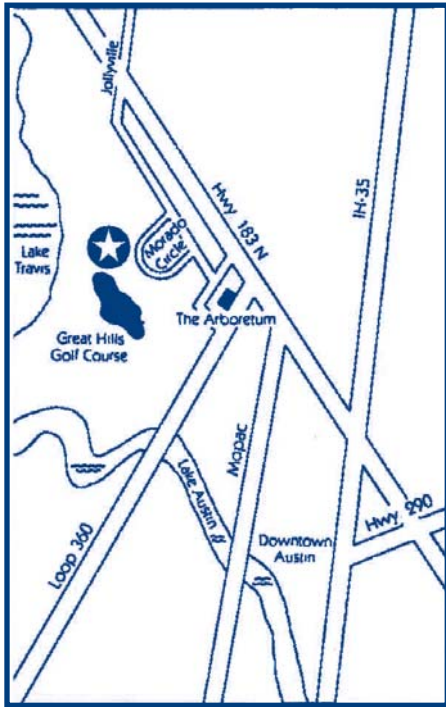


**A-2** 1 Bedroom/ 1 Bath  
660 Square Feet



**B-1** 2 Bedrooms/ 1 Bath  
820 Square Feet

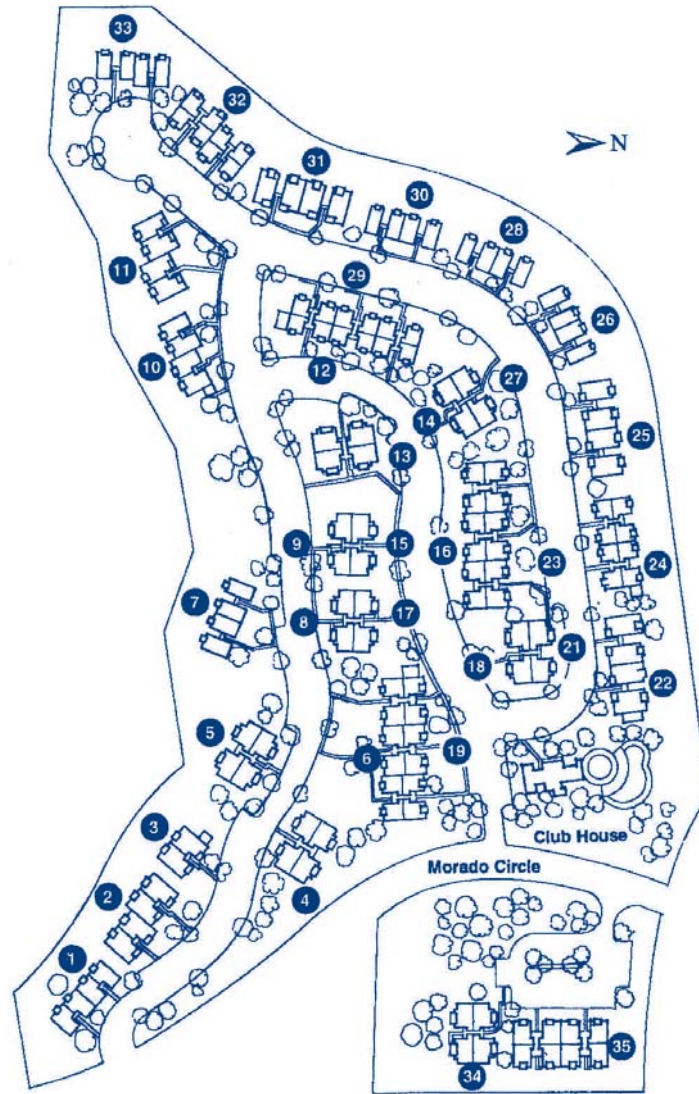
## LOCATION



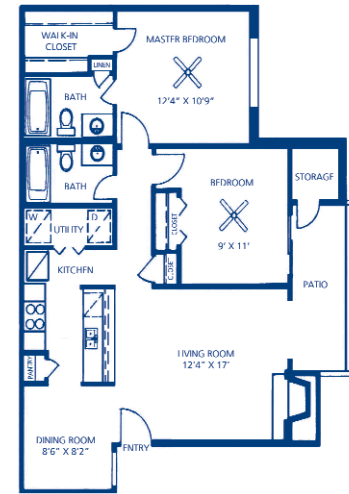
## Great Hills Apartment Homes

10610 Morado Circle  
Austin, TX 78759  
Phone: 512.346.9366  
Fax: 512.346.7906  
greathillsmgr@northland.com

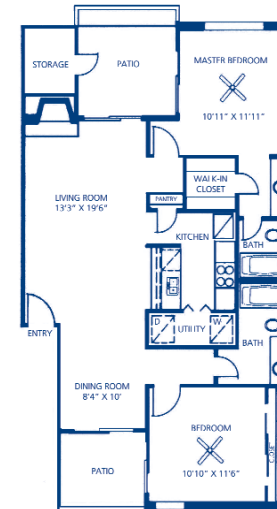
## COMMUNITY MAP



## FLOOR PLANS



**B-2** 2 Bedrooms/ 2 Baths  
900 Square Feet



**B-3** 2 Bedrooms/ 2 Baths  
1,020 Square Feet

WINDOW CUT OUT

3x2"

For company name and logo

Providing Comfort, Convenience  
and  
Customer Service

BUSINESS CARD

3.5 x 2"

Insert Here