

The Commons Apartment Homes

INTERIOR FEATURES

- * Washer/dryer connections
- Spacious floor plans
- Oversized closets
- Private patios/balconies
- Fully-applianced kitchens
- Kitchen pantries
- Outdoor storage area

* in select apartment homes

AMENITIES

- Gated community
- Clubhouse
- Swimming pool
- Regulation-size tennis court
- Barbecue & picnic areas
- Activity area
- Laundry facility
- Resident activities
- Exceptional North Tampa location

The Commons perfectly blends a relaxed environment, exceptional location, and excellent value in apartment home living. Located in North Tampa, our community is minutes from Interstates, parks, the airport, and local shopping centers. Imagine a warm tropical breeze as you sit on your patio or balcony and enjoy the Florida sunshine. Your spacious apartment home is designed to enhance your lifestyle with comfort, convenience, tranquil landscaping and swaying palms.

The Commons has something for everyone. You can enjoy socializing in our centrally located clubhouse, relax by the pool on those hot summer days, or play an invigorating game of tennis on our pro-size tennis court. All of this and more is available at The Commons.

We take pride in providing friendly service with our caring and devoted staff, where our goal is not simply to meet your expectations...but exceed them.

Make The Commons your new home and experience uncommonly great living!

FLOOR PLANS



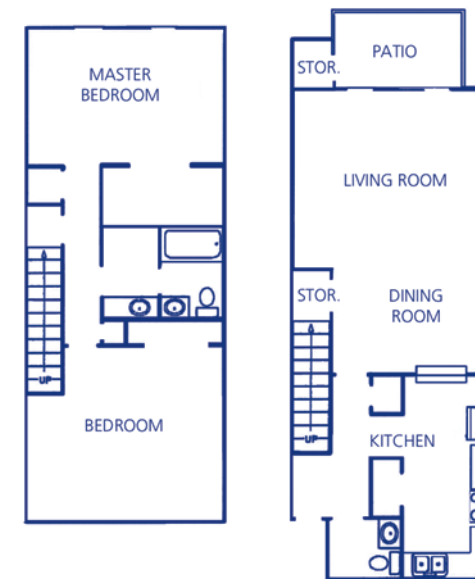
A

2 Bedrooms/ 2 Baths
1,000 Square Feet



C

3 Bedrooms/ 2 Baths
1,550 Square Feet



B

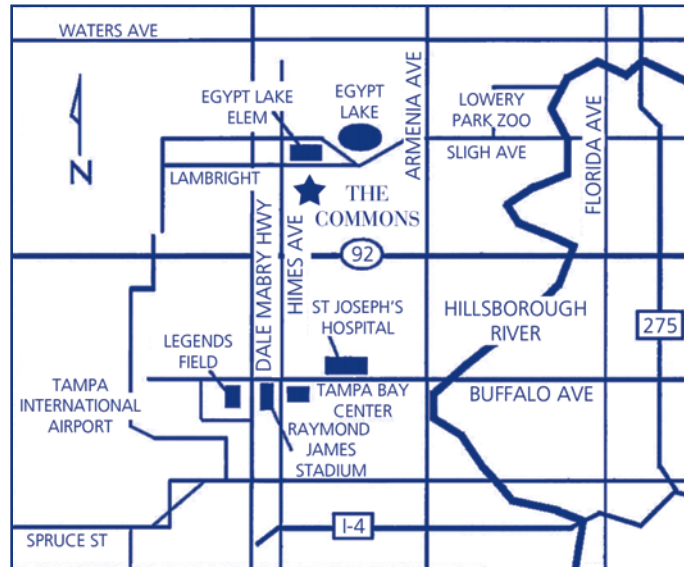
2 Bedrooms/ 1.5 Baths
1,440 Square Feet



D

4 Bedrooms/ 2 Baths
1,600 Square Feet

LOCATION



The Commons Apartment Homes

3408 Lancaster Court
Tampa, FL 33614
Phone: 813.932.2741
Fax: 813.935.7274
thecommons@northland.com

DIRECTIONS

From Kissimmee / Orlando
Take I-4 West toward Tampa/St. Petersburg
Merge onto I-275 North
Take I-275 North to the Sligh Avenue exit
Turn left onto Sligh Avenue
Sligh Avenue becomes Lambright Street
The Commons is 2.7 miles on the left

From Downtown Tampa
Take the Dale Mabry Highway North/US-92
Turn right onto Lambright Street
The Commons is on the right

From St. Petersburg
Take I-275 North toward Tampa
Merge onto Dale Mabry Highway North via
the Dale Mabry Northbound/US-92 East exit
23A
Follow Dale Mabry 3.6 miles to Lambright
Street
Turn right on Lambright Street
The Commons is 1/2 mile on the left
Take the second entrance and follow signs
to the leasing office

AREA ATTRACTIONS

Family Entertainment

Lowry Park Zoo
Busch Gardens
Adventure Island
Museum of Science and Industry
Florida Aquarium

Nature Parks

Al Lopez Park
Hillsborough State Park
Fort Desoto Park

Beaches

Ben T. Davis Beach
Clearwater Beach
St. Petersburg Beach
Indian Rocks Beach
Redington Beach
Treasure Island

Providing Comfort, Convenience
and
Customer Service



www.northland.com

