

WINDOW CUT OUT

For company name and logo

INTERIOR FEATURES

*Three-bedroom floor plans available

- Galley kitchen
- Cable ready
- Spacious closets

*in select apartments

AMENITIES

- Heat/hot water & electricity included
- Olympic size pool
- Tennis courts
- Basketball court
- Volleyball court
- Picnic area with barbecues
- Hiking and biking trails
- Professional landscaping
- Free public transportation
- 12 Clothing care facilities
- Private well water



Cliffside Apartment Homes

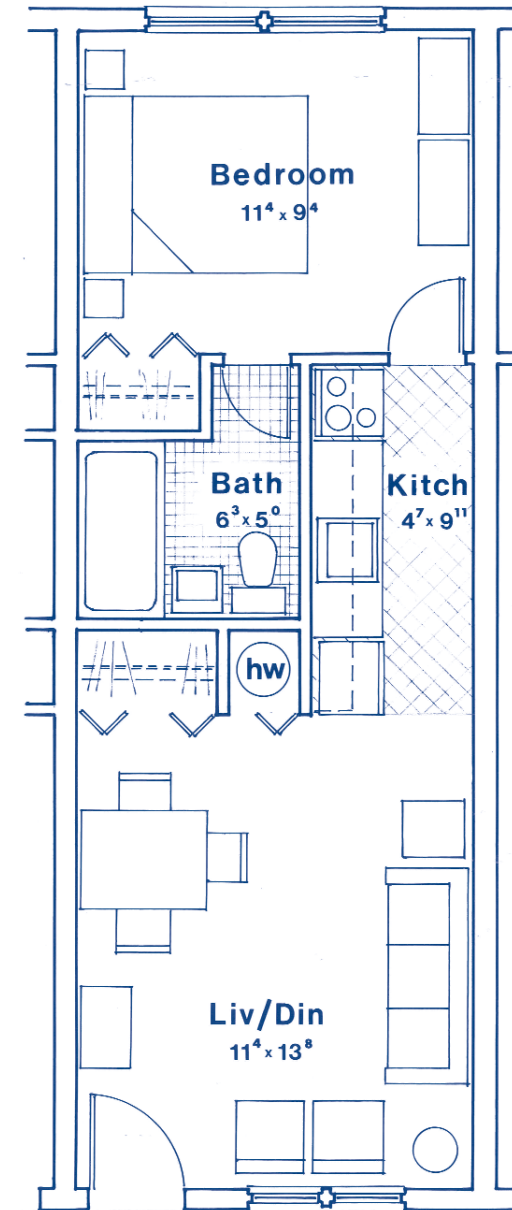
A community you will
want to call home

Cliffside Apartments is a scenic community nestled in the heart of the Pioneer Valley. Located in the Five College Area, it is just minutes away from downtown Amherst, a bustling, eclectic destination offering an exciting social scene complete with book stores, pubs, shops and cafes. Cliffside is also conveniently close to Route 9 where countless shopping plazas, grocery stores, and restaurants await.

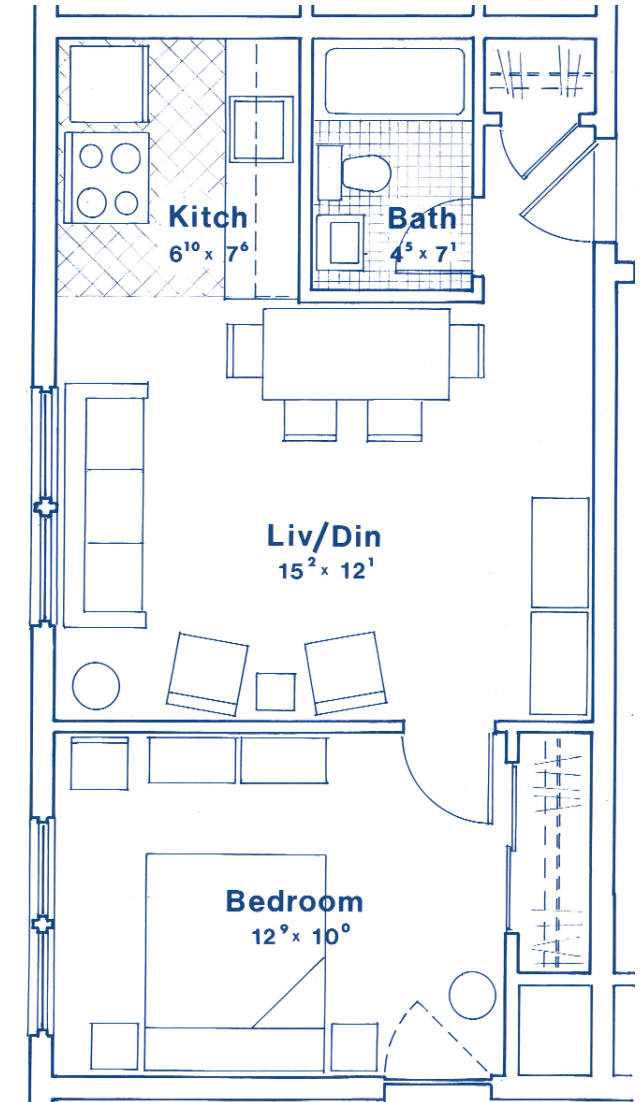
As if that weren't enough, less than an hour away you'll find the Connecticut River, state parks, ski areas, Historic Deerfield, Yankee Candle Village, the Basketball Hall of Fame, Sturbridge Village, the Holyoke Mall, Magic Wings Butterfly Conservatory, and Six Flags Amusement Park.

There's something for everyone. Come make Cliffside your home!

FLOOR PLANS

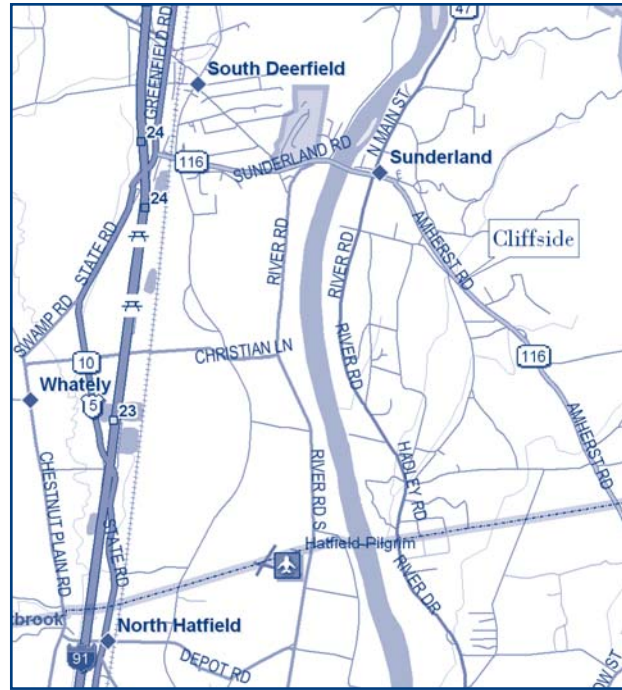


A 1 Bedroom/ 1 Bath
Small
400 Square Feet



B 1 Bedroom/ 1 Bath
Large
475 Square Feet

DIRECTIONS

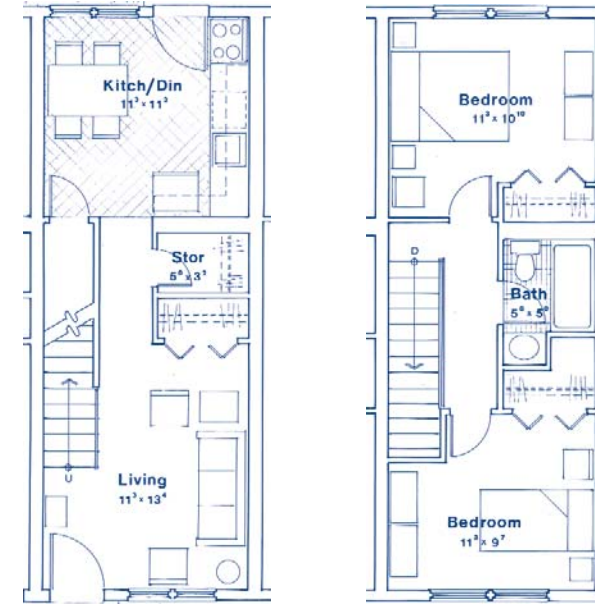


Cliffside Apartment Homes

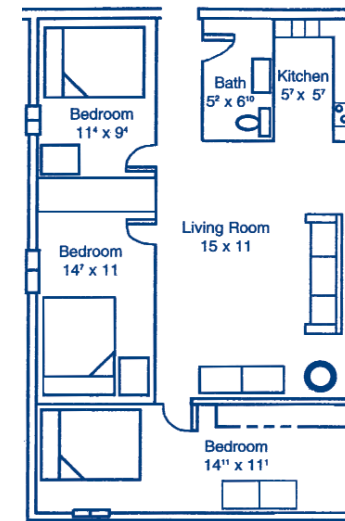
248 Amherst Road
Sunderland, MA 01375
Phone: 413.665.3958
Fax: 413.665.8267
cliffsideapts@northland.com



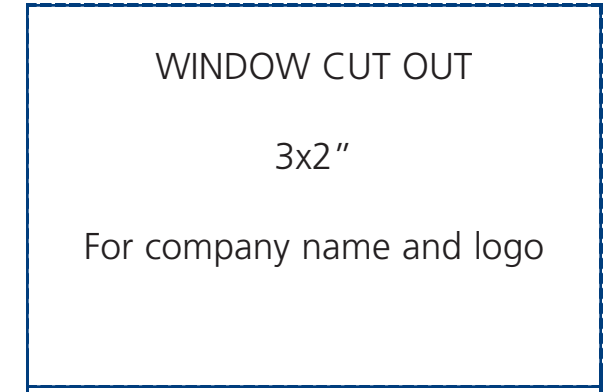
C 2 Bedrooms/ 1 Bath
Garden
650 Square Feet



D 2 Bedroom/ 1 Bath
Townhouse
900 Square Feet



E 3 Bedroom/ 1 Bath
Garden
800 Square Feet



Providing Comfort, Convenience
and
Customer Service

