

WINDOW CUT OUT

For company name and logo

Canyon Creek Apartment Homes

INTERIOR FEATURES

High speed internet access

*Covered parking

Balconies

Cable ready

*Fireplaces

*Fenced-in yards

Oversized closets

*Extra storage

Washer/dryer connections

* in select apartment homes

AMENITIES

Fitness center

Basketball courts

Putting green

Lighted tennis court

Swimming pool

Hot tub

Pets allowed

Laundry facilities

Monitored alarms

Emergency maintenance

Your Apartment Home

A concept created for people who want to escape from the everyday. Nestled amongst native oak trees, the traditional architecture, combined with 18 acres of canyon views creates a casual lifestyle found only in Austin. The view from within is natural, warm, and inviting, while interiors are spacious and functional.

Your Neighborhood

In Northwest Austin, the community is seamlessly secluded in the prestigious neighborhood of The Arboretum. Offering multiple dining pleasures, upscale shopping and a variety of grocery stores, the Arboretum is a diverse and beautiful area. Every convenience is within minutes from your doorstep.

To Our Residents

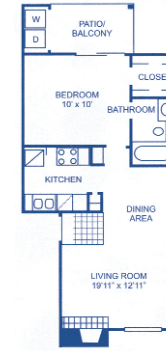
We are dedicated to delivering personal service in a quality home environment. Our goal is to be the home provider of choice - a goal we attain through commitment to our residents and the dedication of our employees. You're in good hands at Canyon Creek.

FLOOR PLANS



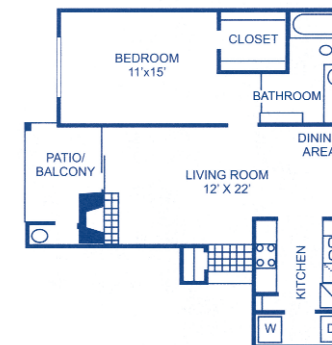
A-1

1 Bedroom/ 1 Bath
554 Square Feet



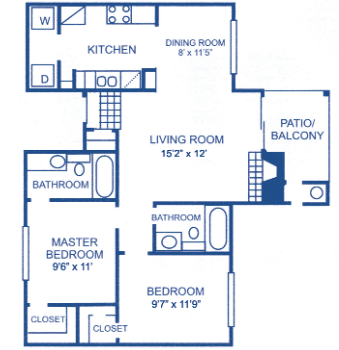
A-2

1 Bedroom/ 1 Bath
650 Square Feet



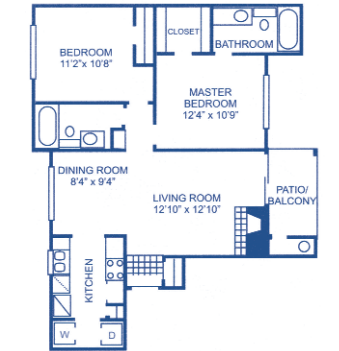
A-3

1 Bedroom/ 1 Bath
713 Square Feet



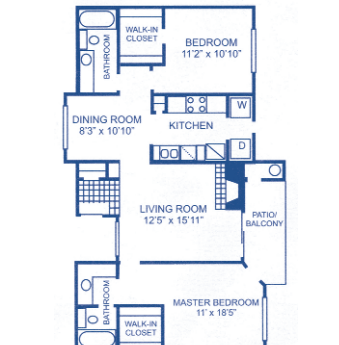
B-1

2 Bedrooms/ 2 Baths
863 Square Feet



B-2

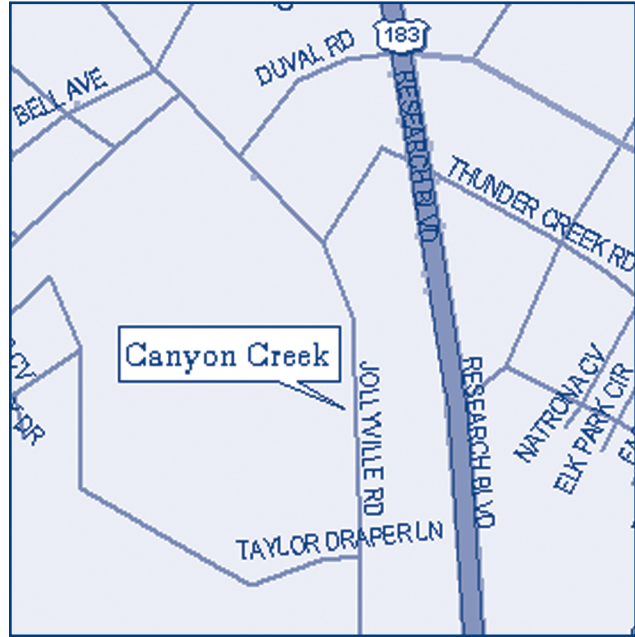
2 Bedrooms/ 2 Baths
911 Square Feet



B-3

2 Bedrooms/ 2 Baths
1021 Square Feet

LOCATION

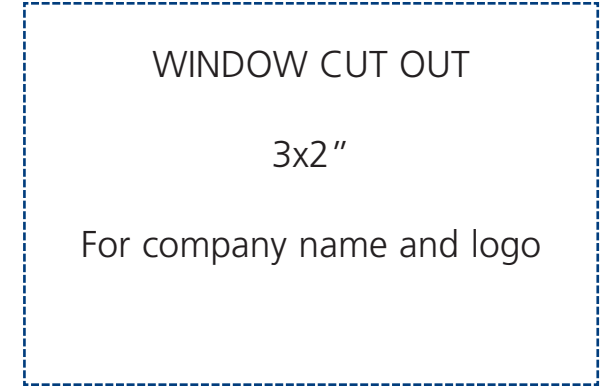
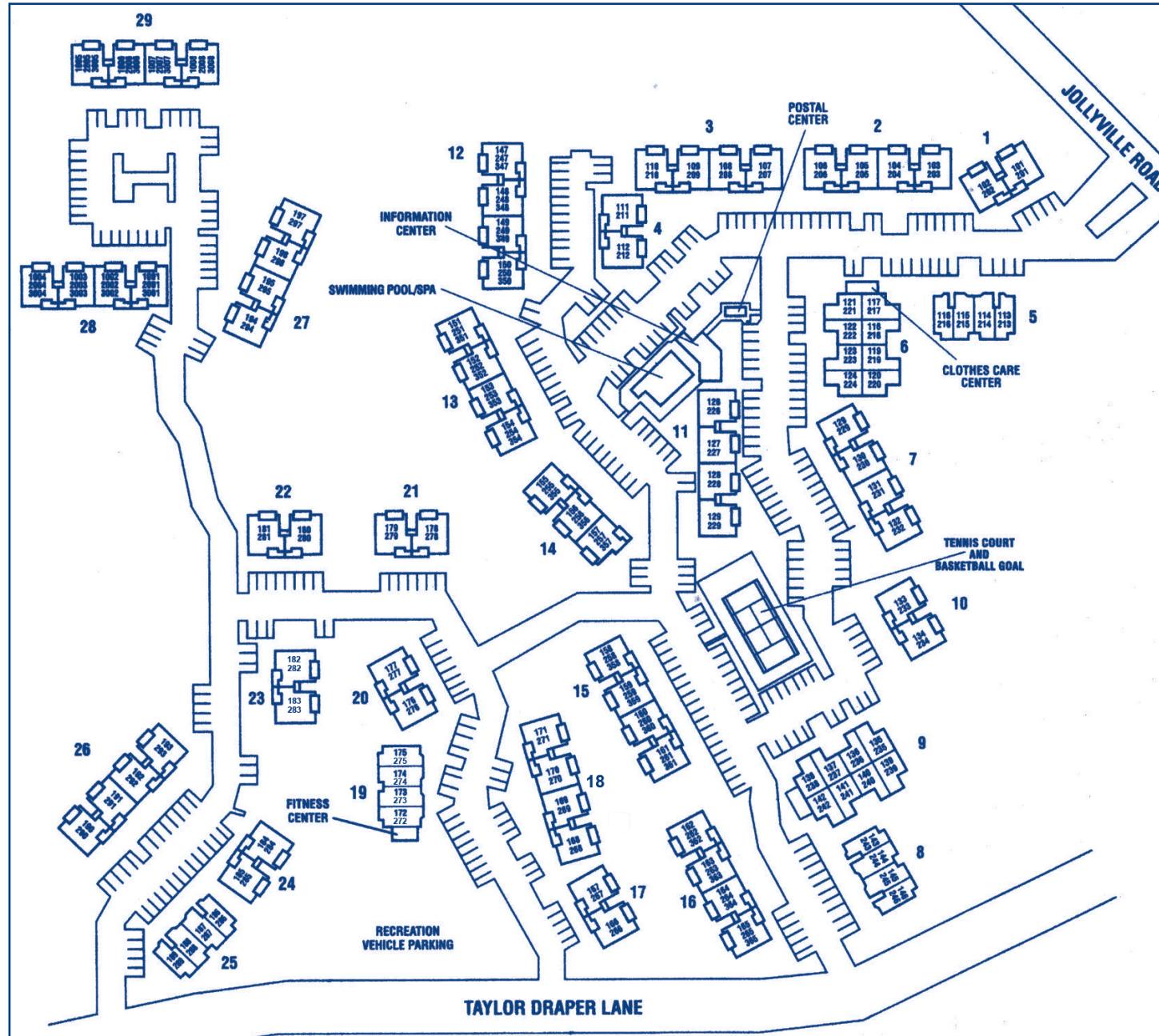


Canyon Creek Apartment Homes

11316 Jollyville Road
Austin, TX 78759
Phone: 512.346.3060
Fax: 512.795.9456
canyoncreekapts@northland.com



COMMUNITY MAP



Providing Comfort, Convenience
and
Customer Service



BUSINESS CARD

3.5 x 2"

Insert Here

