

Bel Air

Apartment Homes

INTERIOR FEATURES

- Spacious floor plans
- Oversized closets
- Ceiling fans
- Large private screened patios/balconies
- Fully-applianced kitchens
- Kitchen pantries
- *Courtyard views
- *Covered parking available

* in select apartment homes

AMENITIES

- Fitness center
- Tropical landscaping
- Four swimming pools
- Jacuzzi
- Car care center
- Laundry facilities open 24 hours
- Pets welcome
- 24-hr emergency maintenance

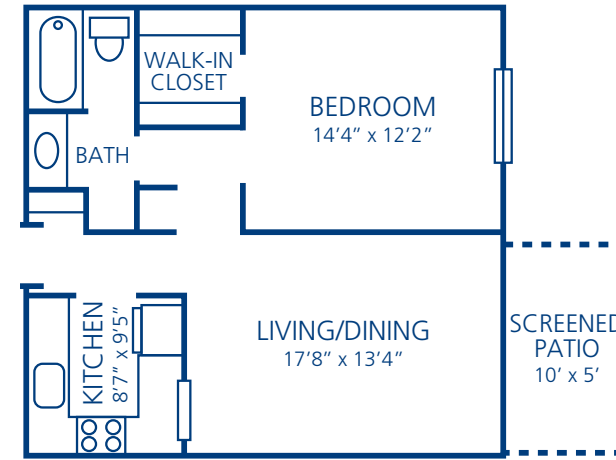
Bel Air features some of the largest apartment homes in Northeast St. Petersburg. Our spacious interiors were designed to enhance comfort and convenience. The community is tucked away in a tranquil lakeside setting amidst shopping, fine dining and entertainment. Relax in the Jacuzzi, enjoy a refreshing swim in one of our four swimming pools, or burn off calories in the fitness center.

As a leading professional in the multifamily communities industry, Northland Investment Corporation is dedicated to providing quality apartment home living and unparalleled customer service at each of its communities. Sit back and relax while our professional and attentive management and service teams cater to your needs.

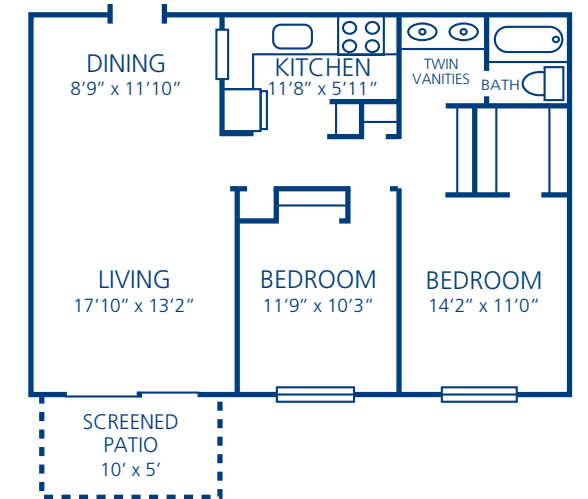
Bel Air is conveniently located 15 minutes from I-275, Tampa International Airport, Clearwater and downtown Tampa.

Come home to the comfort you deserve, while surrounded by the conveniences you desire!

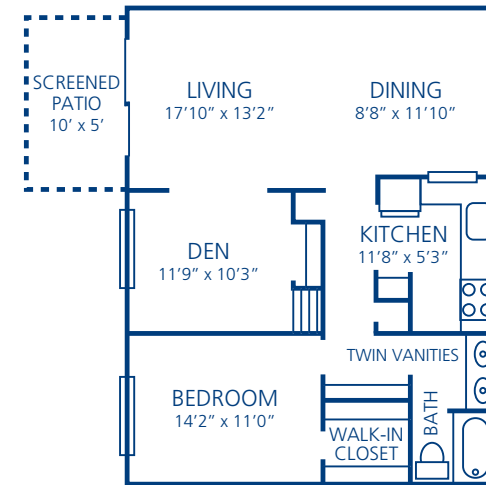
FLOOR PLANS



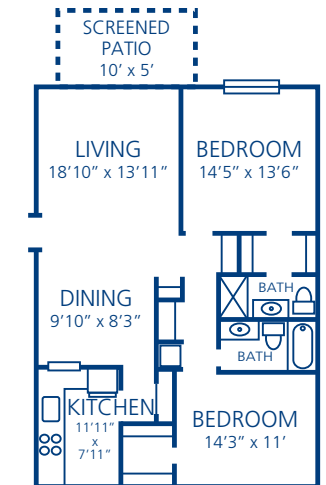
A 1 Bedroom/ 1 Bath
820 Square Feet



C 2 Bedrooms/ 1 Bath
1,020 Square Feet

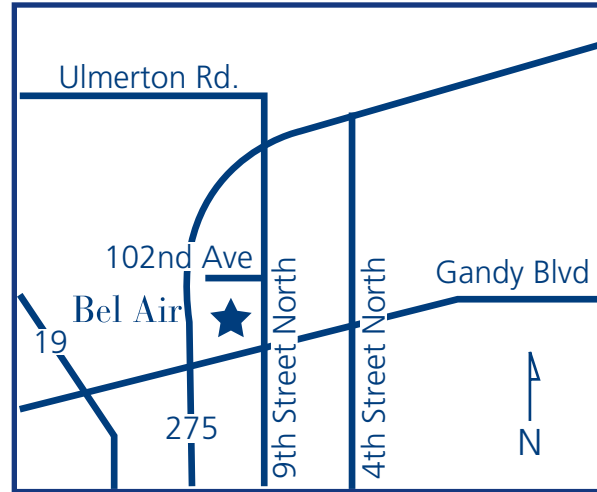


B 1 Bedroom/ 1 Bath
1,020 Square Feet



D 2 Bedrooms/ 2 Baths
1,240 Square Feet

LOCATION



Bel Air Apartment Homes

1200 102nd Avenue North
St. Petersburg, FL 33716
Phone: 727.576.3200
Fax: 727.576.9342
belairapts@northland.com



www.northland.com

DIRECTIONS

From Bradenton

Take I-75 North to I-275 North

Take the Gandy Boulevard North exit and turn right onto Gandy Boulevard

Go approximately 1 mile and turn left onto Martin Luther King Street

Turn left at the first stoplight (102nd Avenue North)

Bel Air is a 1/4 mile on your left

From Tampa

Take I-275 toward St. Petersburg

Cross the Howard Franklin Bridge and take the Roosevelt Road exit

At the bottom of the exit turn left on Roosevelt Road

Follow Roosevelt Road approximately 1 mile

Turn right on Martin Luther King Street

Turn right on 102nd Avenue North

Bel Air is 1/4 mile on your left

From Clearwater

Head East on Cleveland Street toward North Fort Harrison Avenue

Turn slight right at Gulf to Bay Boulevard (Rt 60)

Merge onto Bayside Bridge via the CR-611 South exit

Continue South on 49th Street North

Turn left at Ulmerton Road

Slight right at Roosevelt Boulevard North

Turn right at Martin Luther King Street North

Turn right at 102nd Avenue North

Bel Air will be on your left

From Orlando

Take I-4 West and follow directions from Tampa

AREA ATTRACTIONS

BayWalk – shopping, theaters and dining

The St. Petersburg Historic Coliseum

The Pier & Aquarium - shopping, dining, adventure and community marine education

Florida International Museum

Dali Museum

- Family Tour
- Art Activities
- Treasure Hunt
- Just for Families

Beaches

St. Petersburg Beach

Treasure Island Beach

Clearwater Beach

Madeira Beach

North Redington Beach

Sunset Beach

Theme Parks

Sunken Gardens

Busch Gardens

Golf Courses

Airco in Clearwater

Bay Pointe Golf Club in Seminole

Providing Comfort, Convenience
and
Customer Service

