

The Arboretum at Stonelake Apartment Homes

FLOOR PLANS

INTERIOR FEATURES

- 9-foot ceilings
 - Built-in bookshelves
 - Ceiling fans
 - Crown molding
 - Dishwasher
 - *Eat-in kitchen
 - Full-sized washer & dryer connections
 - *Garden tub
 - Linen closets
 - *Oversized private patio or balcony
 - Vaulted ceilings
 - Walk-in closets
 - Wood burning fireplace with cast stone hearth
- * in select apartment homes

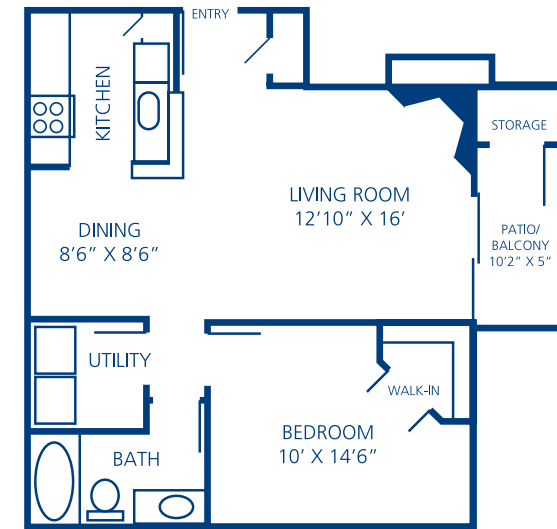
AMENITIES

- Business center
- 24-hour fitness center
- Gated community
- Hot tub
- Laundry facility
- Pet friendly
- Picnic and barbecue areas
- Racquetball court
- Sand volleyball court
- Swimming pools & sundecks

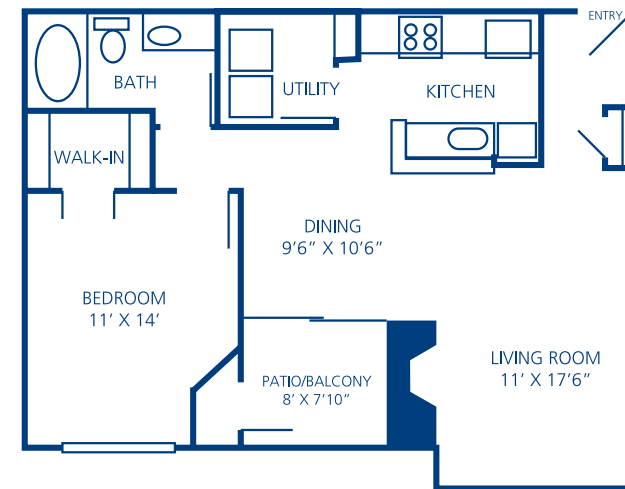
The Arboretum at Stonelake was crafted to luxury standards while incorporating its roots into the design. This hacienda-style community with stucco exteriors and rich colors offers a variety of floor plans and amenities that meet a wide range of tastes and needs.

Our well-appointed community is located in the heart of the Arboretum District of Northwest Austin. Situated on a beautifully wooded, 18-acre site, the community is bounded by four major roadways within the Arboretum district, also referred to as the Golden Triangle.

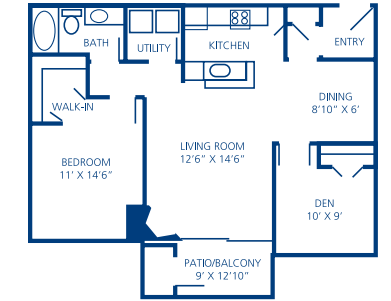
Located between US-183, the North Mopac Expressway, and Capital of Texas Highway, The Arboretum at Stonelake is convenient to shopping, the Great Hills Golf Club and all of the urban amenities of downtown Austin.



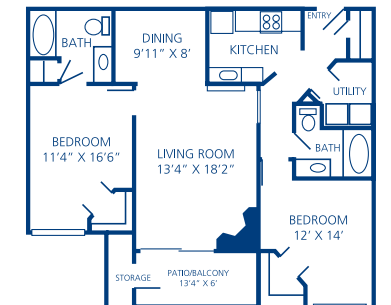
A 1 Bedroom/ 1 Bath
681 Square Feet



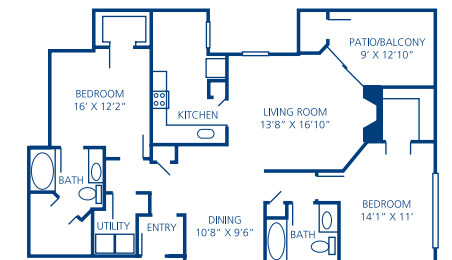
B 1 Bedroom/ 1 Bath
765 Square Feet



C 1 Bedroom/ 1 Bath/Den
878 Square Feet



D 2 Bedrooms/ 2 Baths
1,083 Square Feet



E 2 Bedrooms/ 2 Baths
1,241 Square Feet

LOCATION



The Arboretum at Stonelake Apartment Homes

9801 Stonelake Boulevard
Austin, TX 78759
Phone: 512.527.8000
Fax: 512.527.8055
stonelakeapts@northland.com

AREA ATTRACTIONS

Arboretum Hills Golf Course
Arboretum retail
Downtown fine dining/shopping
Lakeline Mall
Lady Bird Johnson Wildflower Center
Lake Austin Hike & Bike Trails
Sixth Street
The Domain - world class shopping
Waterloo Park
Zilker Park

DIRECTIONS

From North Austin

Take I-35 South
Turn right on Parmer Lane
Turn left on Mopac Express Way South
Turn right on York Boulevard
Turn right on Stone Lake Boulevard

From South Austin

Take I-35 North
Take US-183 North
Turn right on TX-360-Loop/Capital of Texas Hwy/Great Hills Trail
Turn right on Stone Lake Boulevard

From Cedar Park

Take US-183 South
Turn left on TX-360-Loop/Capital of Texas Hwy/Great Hills Trail
Turn right on Stone Lake Boulevard

Providing Comfort, Convenience
and
Customer Service



www.northland.com

